



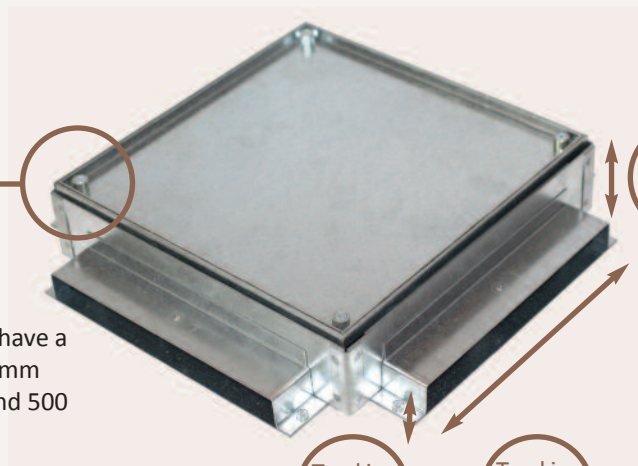
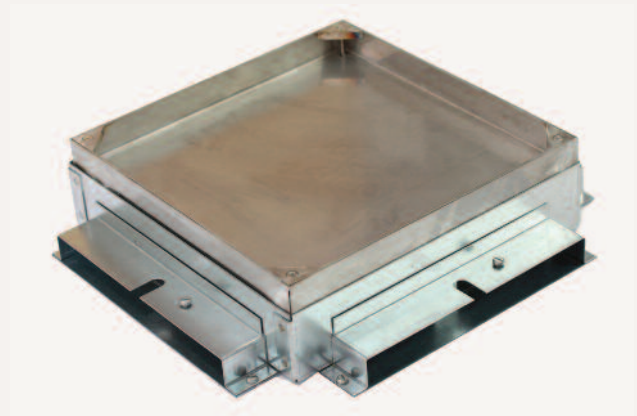
Why in screed trunking?

A cost effective screed trunking designed to be laid prior to the screed being installed that sits within the screed.

- Trunking is quick and easy to install. No exact levelling of the trunking is required. Service outlet and junction boxes to suit
- Steel thickness can be reduced as the trunking is not taking structural load

We stock a range to suit any screed from 55mm

- Easily adaptable to existing screed installations
- A range of sizes available ex-stock, 2 or 3 compartment
- Compatible with all of our service outlet boxes
- The range is simple to install, with four basic components:
 - Trunking
 - Service outlet boxes
 - Junctions
 - Vertical access
- Suitable for screeds of 55mm or more



Lid options

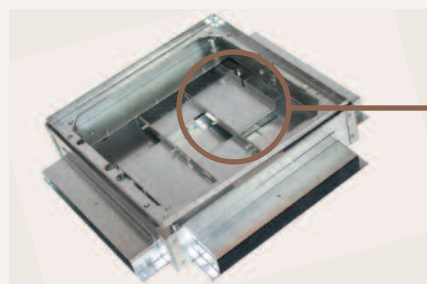
- Junction boxes as standard have a galvanised steel lid with a 6mm recess to match the 2000 and 500 series floor boxes.
- Stainless steel or brass boxes with deeper recesses are available to match the 700 series floor boxes
- All of our floor box ranges can be made to suit in screed trunking

Screed depth

- Junction boxes and service outlet boxes ordered to suit the minimum expected height of the screed
- Height can be adjusted prior to laying the floor



Any size can be specified by giving us trunking width (X), trunking height (Y) and the number of compartments.



Junction boxes

- All junction boxes are supplied with a height adjustable inner frame, and flyover sets for segregation



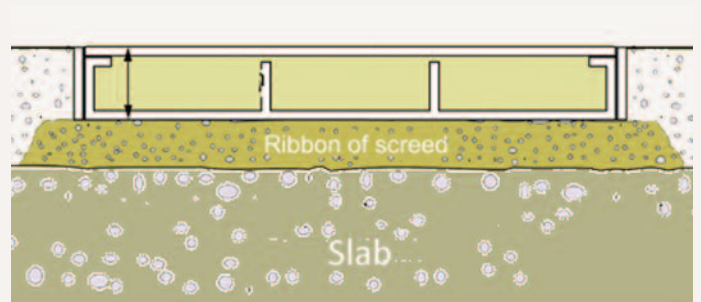
Why flush screed trunking?

Flush screed trunking is a robust trunking designed to fit flush with the surrounding screed.

- Shallow range suitable for shallow screed
- Deep range can have floor boxes added to any point in the trunking run, at any time giving great flexibility
- Modular layout simplifies future modifications
- Can be provided with a recessed lid so that the floor covering is contained by trunking

We stock a range to suit any screed from 25mm

- Easily adaptable to existing screed installations
- A range of sizes available ex-stock, 2,3 or 4 compartment
- Compatible with all of our service outlet boxes
- Stainless steel and other finishes available to match the 700 series floor boxes
- The range is simple to install, with four basic components:
 - Trunking
 - Service outlet boxes
 - Junctions
 - Vertical access



What options are available?

As with all our ranges, we stock a standard range of products, but profiles can be adapted to any requirements.

The trunking suits all of our floor box ranges.

For refurbishment, we can make a floor box to suit the existing flush screed trunking that is already installed

Recessed lids can be supplied to match our 700 series range of floor boxes, with or without lifting corner blocks

removable dividers allow the floor box layout to be changed at any time

Width X

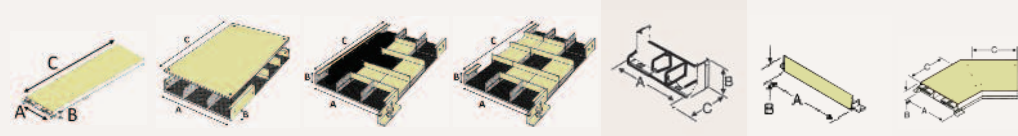
Height Y





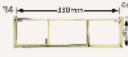

Trunking can be made to any dimension, and can be specified by giving us the trunking width (X), height (Y) and number of compartments.

Standard ranges are from 25mm to 65mm deep. Ranges of height 55mm or more can have floor boxes fitted along the trunking run

See page 24 for further information

Stock ranges of flush screed trunking, including part references and part dimensions



	2m length	Flat bend	Tee	Cross	Vertical bend	End cap	45° bend
 FF4-150x25 -2 compartment -150 x 25mm	FF4-130-150x25 A=153 B=25 C=2000	FF4-131-150x25 A=153 B=25 C=251	FF4-132-150x25 A=153 B=40 C=350	FF4-133-150x25 A=153 B=40 C=350	FF4-134-150x25 A=153 B=25 C=25	FF4-138-150x25 A=153 B=25	FF4-144-150x25 A=153 B=25 C=106
 FF4-150x40 -2 compartment -150 x 40mm	FF4-130-150x40 A=153 B=40 C=2000	FF4-131-150x40 A=153 B=40 C=251	FF4-132-150x40 A=153 B=40 C=350	FF4-133-150x40 A=153 B=40 C=350	FF4-134-150x40 A=153 B=40 C=40	FF4-138-150x40 A=153 B=40	FF4-144-150x40 A=153 B=40 C=106
 FF12 † -3 compartment -330 x 55mm	FF12-130 A=332 B=55 C=2000	FF12-131 A=332 B=55 C=500	FF12-132 A=332 B=55 C=500	FF12-133 A=332 B=55 C=500	FF12-134 A=332 B=55 C=55	FF12-138 A=332 B=55	FF12-144 A=332 B=55 C=432
 FF13 †† -3 compartment -330 x 65mm	FF13-130 A=332 B=65 C=2000	FF13-131 A=332 B=65 C=500	FF13-132 A=332 B=65 C=500	FF13-133 A=332 B=65 C=500	FF13-134 A=332 B=65 C=65	FF13-138 A=332 B=65	FF13-144 A=332 B=65 C=432
 FF14 ††† -3 compartment -330 x 65mm - recessed lid	FF14-130 A=332 B=71††† C=2000	FF14-131 A=332 B=71††† C=500	FF14-132 A=332 B=71††† C=500	FF14-133 A=332 B=71††† C=500	FF14-134 A=332 B=71* C=71*	FF14-138 A=332 B=71*	FF14-144 A=332 B=71* C=432
 FF15 †† -4 compartment -440 x 65mm	FF15-130 A=442 B=65 C=2000	FF15-131 A=442 B=65 C=540	FF15-132 A=442 B=65 C=644	FF15-133 A=442 B=65 C=644	FF15-134 A=442 B=65 C=65	FF15-138 A=442 B=65	FF15-144 A=442 B=65 C=409

† to suit 2000 and 500 series boxes 55mm deep

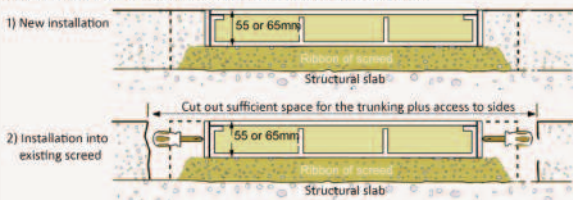
†† to suit 2000 and 500 series boxes 65mm deep, and 700 series for floor material >= 10mm

††† The lid recess for the FF14 range is supplied as 6mm as standard to match our floor boxes. Other recesses can be made. It can also be made with a stainless steel recessed lid and frame to any depth to match our 700 series of floor boxes.

Installation guide. Note systems 55mm deep or more, the floor boxes can be repositioned at any time

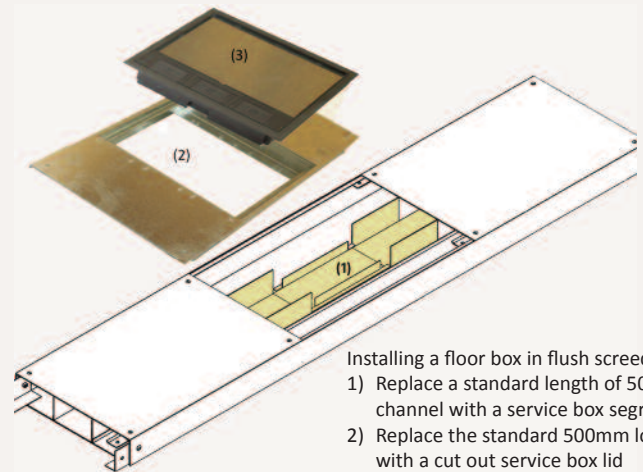
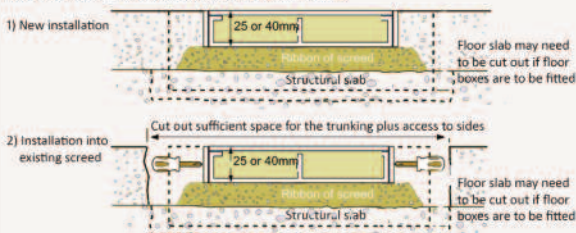
Installation of deep trunking.

Note floor boxes will fit within the trunking at any point in the trunking run



Installation of shallow FF4 trunking.

Note floor boxes must be located prior to laying the trunking



Installing a floor box in flush screed trunking

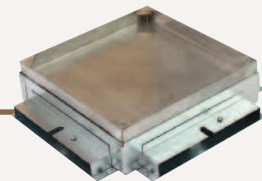
- 1) Replace a standard length of 500mm channel with a service box segregation
- 2) Replace the standard 500mm long lid with a cut out service box lid
- 3) Fit the service box lid into the cut out

Stock ranges of in screed trunking, including part references

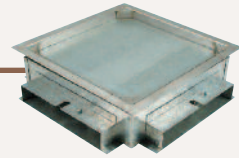
							
	Ref 91 2m length	Ref 92 Vertical bend	Ref 93 Flat bend	Ref 94-98+ Junction box	Ref 38 End cap	Ref 45 45deg bend	
	U2 - 2 equal compartment -150 x 25mm	U2-91	U2-92	U2-93	U2-94 (cross) U2-95 (tee) U2-96 (angle) U2-97 (through) U2-98 (terminal)	U2-38	U2-45
	U3 - 3 equal compartment -225 X 25mm	U3-91	U3-92	U3-93	U3-94 (cross) U3-95 (tee) U3-96 (angle) U3-97 (through) U3-98 (terminal)	U3-38	U3-45

The junction boxes are fitted with a height adjustable inner frame to enable on site adjustment after the screed has been laid to level the top of the lid with the top of the finished floor level. As standard, junction boxes are provided with a galvanised steel lid and frame with a 6mm recess, fitted with M8 bushes for fixing the lid to the box and to allow future lifting. As an optional extra, they can be fitted with a stainless steel lid and standard frame (no trim) or a stainless steel trim frame. These lid are fitted with stainless steel corner blocks instead of bushes.

For a stainless steel lid and (no trim) frame please add the suffix ST to your order, for example U3-94-ST - 65mm deep

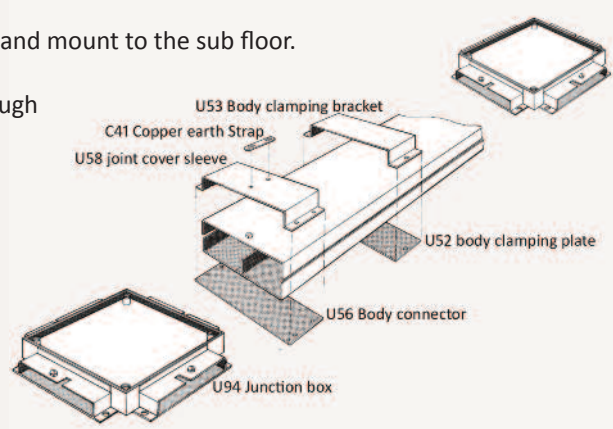


For a stainless steel lid with trim flange, please add the suffix ST-FLANGE to your order, for example U3-94-ST-FLANGE - 65mm deep



Underfloor in screed trunking installation guide

- 1) order the floor boxes and junction boxes to you lowest anticipated screed height.
- 2) position the floor boxes and junction boxes according to the required layout and mount to the sub floor.
- 3) Connect the trunking body to the junctions and floor boxes by inserting through the box connecting sleeve, cutting any trunking lengths as required.
- 4) Connect the vertical bends as wall connections.
- 5) Cables may then be placed into the open trunking from above. It is a good idea to add pull wires at this stage for any future cable changes.
- 6) Place the trunking lids on to the bodies.
- 7) Tighten the joint cover sleeves at the junction and floor boxes and between the lengths of trunking. Add a single width clamp to the middle of a length of trunking. The joint cover sleeve is fitted with 2 bushes to enable linking of a ref C41 copper earth bar



8) Screed

† all junction boxes are made to a height to suit your screed depth. If not height is specified a default height of 65mm will be provided.