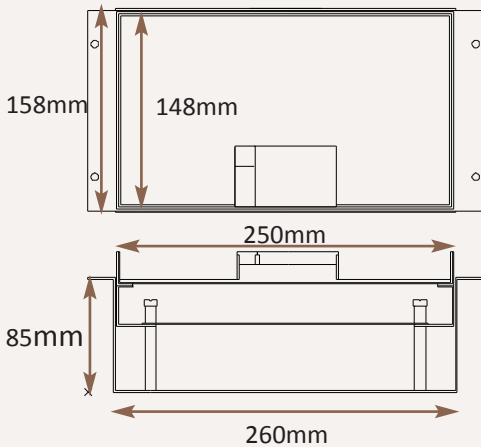
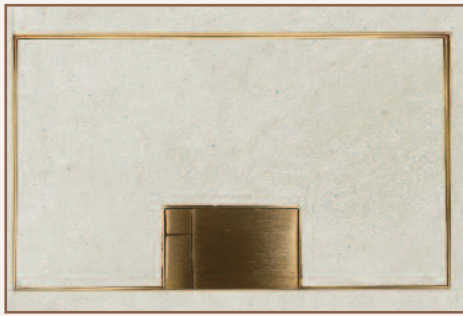
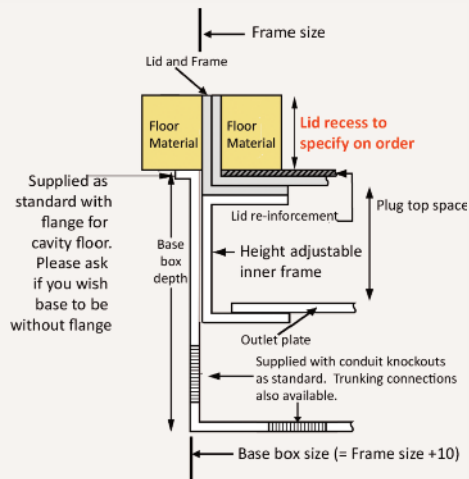
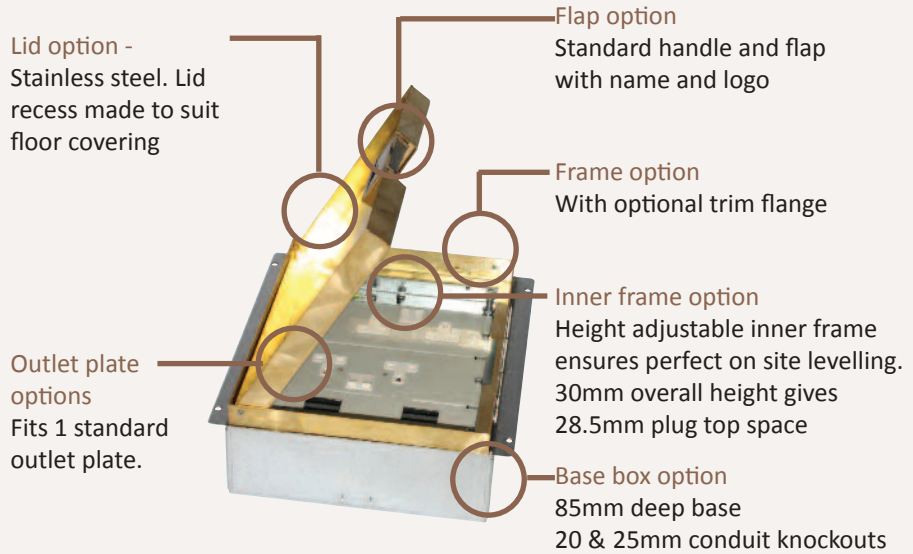


Standard Finish: M18-BR-TR-SAT



Frame size 250x148mm (with 12mm overall visible flange)
 Base box size 260x158mm
 Lid recess - advise on order to suit floor covering
 Base with 20 & 25mm conduit knockouts in base and sides



Other Options for the M18-BR:

- M18-BR-FL-SAT Satin brass trim flange, recessed lid
- M18-BR-FL-MIR Mirror Polished brass trim flange, recessed lid
- M18-BR-TR-MIR Mirror Polished brass trimless, recessed lid
- MIN-FLTLID Extra to a flat instead of recessed lid
- MIN-LOCK Extra to supply lid and frame with a cam lock
- SB71RETRO Retro stlye base box fitting entirely within frame
- 700-BRONZE Antique Bronze finish (Antique Brass and Jordan Bronze also available)

IMAGE TO FOLLOW	IMAGE TO FOLLOW	IMAGE TO FOLLOW
IMAGE TO FOLLOW	IMAGE TO FOLLOW	
IMAGE TO FOLLOW	IMAGE TO FOLLOW	IMAGE TO FOLLOW
IMAGE TO FOLLOW		IMAGE TO FOLLOW

