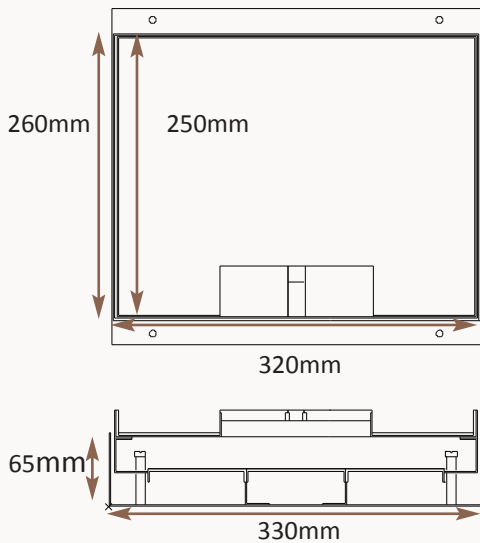


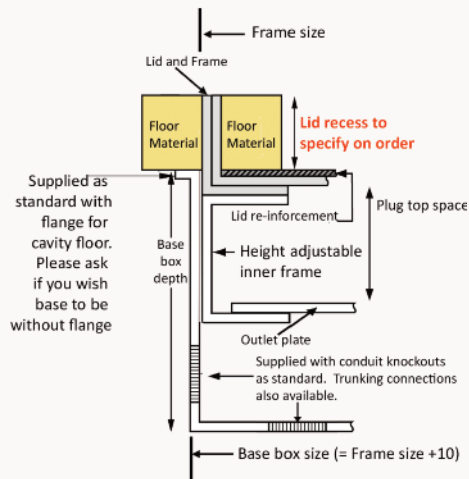
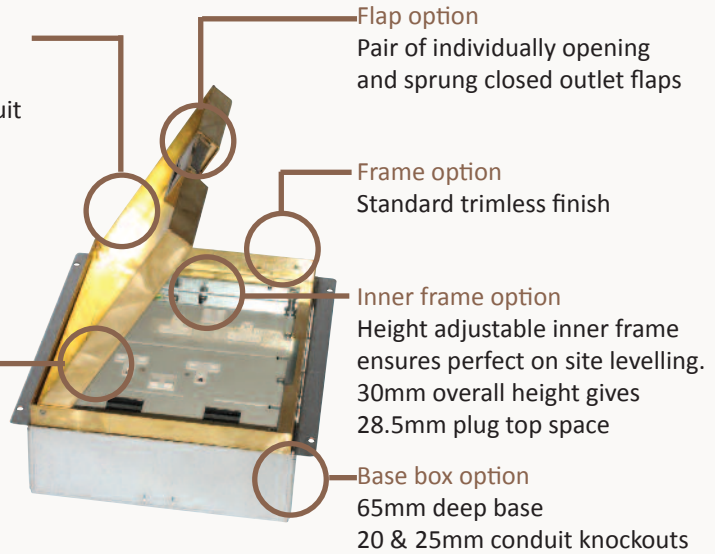
Standard Finish: M36-BR-TR-SAT



Frame size 320x250mm
Base box size 330x260mm
Lid recess - advise on order to suit floor covering
Base with 20 & 25mm conduit knockouts in base and sides

Lid option -
Satin Brass. Lid
recess made to suit
floor covering

Outlet plate
options
Fits 3 standard
outlet plates.



Other Options for the M36-BR:

- M36-BR-FL-SAT Satin brass trim flange, recessed lid
- M36-BR-FL-MIR Mirror Polished brass trim flange, recessed lid
- M36-BR-TR-MIR Mirror Polished brass trimless, recessed lid
- MIN-FLTLID Extra to a flat instead of recessed lid
- MIN-LOCK Extra to supply lid and frame with a cam lock
- SB73RETRO Retro stlye base box fitting entirely within frame
- 700-BRONZE Antique Bronze finish (Antique Brass and Jordan Bronze also available)

IMAGE TO FOLLOW

IMAGE TO FOLLOW

IMAGE TO FOLLOW



IMAGE TO FOLLOW

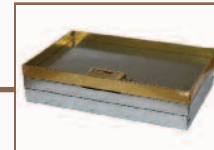


IMAGE TO FOLLOW

