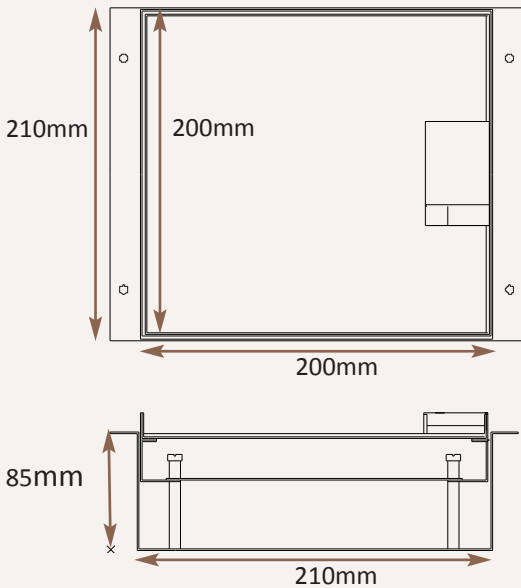
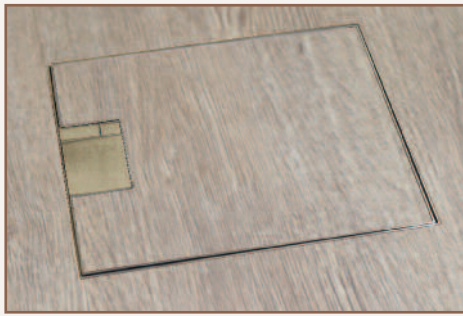
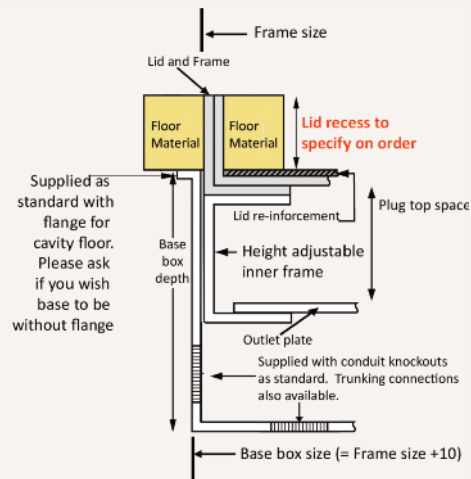
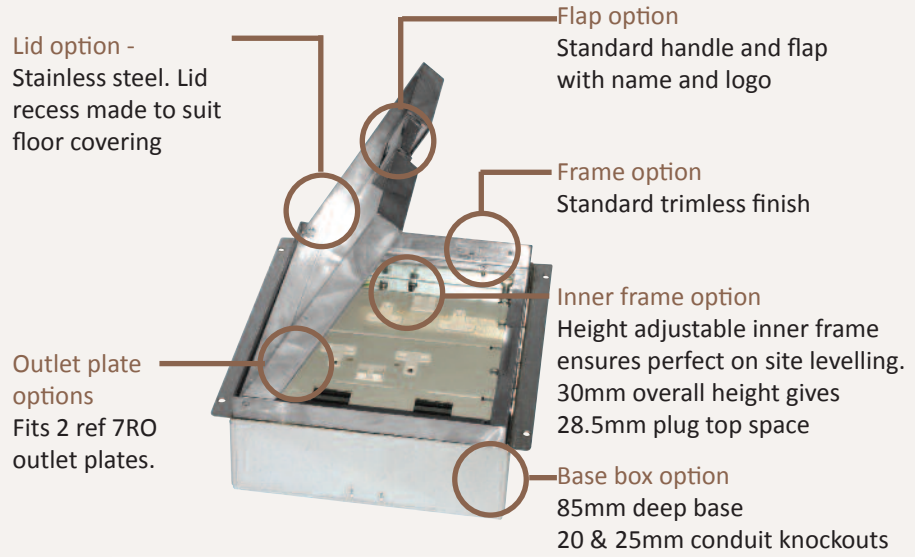


Standard Finish: MM8-ST-TR-SAT



Frame size 200x200mm
 Base box size 210x210mm
 Lid recess - advise on order to suit floor covering
 Base with 20 & 25mm conduit knockouts in base and sides



Other Options for the MM8-ST:

MM8-ST-FL-SAT Satin stainless steel 12.5mm trim flange, recessed lid

MM8-ST-FL-MIR Mirror Polished stainless steel 12.5mm trim flange, recessed lid

MM8-ST-TR-MIR Mirror Polished stainless steel trimless, recessed lid

MIN-FLTLID Extra to a flat instead of recessed lid

MIN-LOCK Extra to supply lid and frame with a cam lock

SB7MRETRO Retro style base box fitting entirely within frame

