

The Premium floor box for any floor covering...



The Minima floor box offers an infinite number of variations, enabling it to satisfy any site conditions. We stock a variety of standard sizes, but any dimension can be made to any requirement. We recommend that you first choose the number and type of services in a box which will determine the minimum size of box required. The sub floor will determine the base box depth. The final floor material will determine the lid recess, trim flange and other requirements, and may also influence the choice of size to match tile sizes.

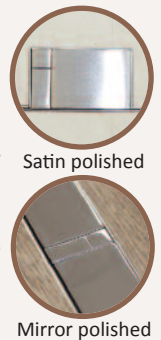
Lid options

- As standard with a recessed lid (to suit your floor covering†)
- Or with a flat lid



Outlet flap options

- Standard 1 & 2 compartment with 1 flap
- Standard 3 & 4 compartment with 2 flaps
- Also available with brush strip outlet instead of flap



Finish options

- As standard in satin polished brass or stainless steel
- Also optional mirror polish
- Also available with a bronze surface finish:



Inner frame options

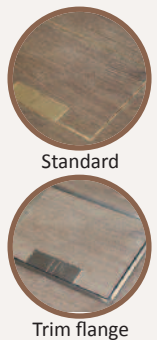
Height adjustable inner frame ensures perfect on site levelling. Standard gives 29mm or 69mm plug top space. This can be custom made giving ample room for audio visual connections or phone chargers

Outlet plate options

The number of 'compartments' of a box equals the number of plates it can fit. Any plate can be made to order, just supply cutout details.

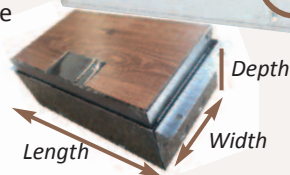
Trim frame Options:

- As standard without trim flange
- Optional trim flange available



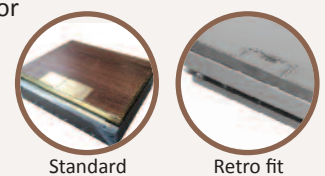
Size options:

- Any dimension can be altered to any value
- Standard square sizes from 150mm to 300mm
- Standard rectangular sizes from 1 to 4 compartment



Base box options

- Any depth greater than 65mm is possible
- Feed type - conduit, screed trunking, busbar
- Base can be designed to fit within the top frame if required, e.g. if the finished floor is already laid
- Note that the minimum overall depth from top of finished floor to bottom of base is 75mm



† We recommend a recess of 30mm or less for stone tiles due to the weight - please specify when ordering



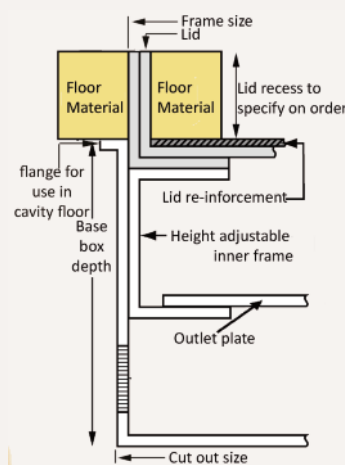
The ordering product code of all standard sizes is shown below. Other sizes are available to order, please call our sales team to discuss. Unless specified otherwise, all boxes are supplied in the standard finish, to the lid recess that must be specified on ordering, with 20 and 25mm conduit knockout in the base box to suit either cavity floors or to be fixed remotely in screed floors.

Bases are held in stock, tops are finished to order and made to your specific lid recess^{††} which must be specified on order. To order please call on 020 8683 1126, fax on 020 8689 7896 or email info@cableductuk.com

Part range prefix		Number of plates	Frame size (mm) ^{†††}	Base box depth (mm)	Plug top space (mm)
Stainless Steel	Brass				
MIN-MS6C-ST	MIN-MS6C-BR	1	150x150	65†	29
MIN-MS8C-ST	MIN-MS8C-BR	1	150x150	85	29
MIN-MS2C-ST	MIN-MS2C-BR	1	150x150	120	69
MIN-M16C-ST	MIN-M16C-BR	1	250x148	65†	29
MIN-M18C-ST	MIN-M18C-BR	1	250x148	85	29
MIN-M12C-ST	MIN-M12C-BR	1	250x148	120	69
MIN-MM6C-ST	MIN-MM6C-BR	2	200x200	65†	29
MIN-MM8C-ST	MIN-MM8C-BR	2	200x200	85	29
MIN-MM2C-ST	MIN-MM2C-BR	2	200x200	120	69
MIN-M26C-ST	MIN-M26C-BR	2	233x250	65†	29
MIN-M28C-ST	MIN-M28C-BR	2	233x250	85	29
MIN-M22C-ST	MIN-M22C-BR	2	233x250	120	69
MIN-M36C-ST	MIN-M36C-BR	3	320x250	65†	29
MIN-M38C-ST	MIN-M38C-BR	3	320x250	85	29
MIN-M32C-ST	MIN-M32C-BR	3	320x250	120	69
MIN-M06C-ST	MIN-M06C-BR	3	300x300	65†	29
MIN-M08C-ST	MIN-M08C-BR	3	300x300	85	29
MIN-M02C-ST	MIN-M02C-BR	3	300x300	120	69
MIN-M46C-ST	MIN-M46C-BR	4	407x250	65†	29
MIN-M48C-ST	MIN-M48C-BR	4	407x250	85	29
MIN-M42C-ST	MIN-M42C-BR	4	407x250	120	69



ref MIN-M38C-ST-TR-SAT, 3 compartment satin stainless, trimless, with 15mm lid



Finish suffixes:

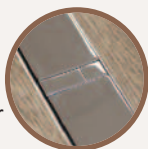
-TR-SAT

Trimless, satin



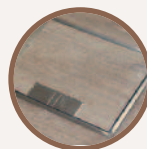
-TR-MIR

Trimless, Mirror



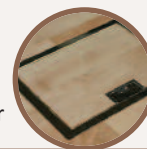
-FL-SAT

Trim Flange, Satin



-FL-MIR

Trim Flange Mirror



Optional Extras:

SBOX-MIN+ST

Extra to supply box in 2mm stainless steel, with 4mm thick infill plate to withstand larger loads

SBOX-MIN+BR

Extra to supply box in 2mm brass, with 4mm thick infill plate to withstand larger loads

MIN-BRUSH

Brush cable exit

MIN-IP65

Extra to IP65 (sealed only when not in use)

MIN-LOCK

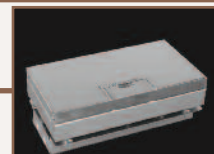
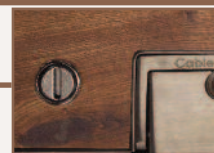
Extra to supply lid and frame with a cam lock

MIN-FLTLID

Extra to a flat instead of recessed lid

SBOX-RETRO

Extra to supply a base box and frame that sit within the top frame for fittings retrospectively into laid floors



† Minimum overall depth from top of finished floor to bottom of base is 75mm

†† We recommend a recess of 30mm or less due to the weight of the lid when filled

††† Note that the cut out required in the floor for the base box is 10mm larger than these frame sizes