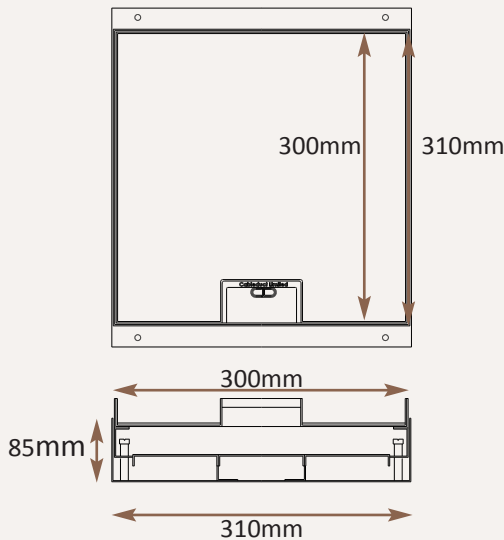


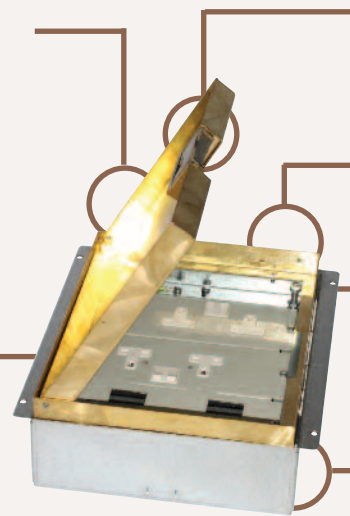
*Standard Finish*



Frame size 300x300mm  
 Base box size 310x310mm  
 Lid recess - advise on order to suit floor covering  
 Base with 20 & 25mm conduit knockouts

Lid option -  
 Brass. Lid recess  
 made to suit  
 floor covering

Outlet plate  
 options  
 Fits 3 standard  
 outlet plates.

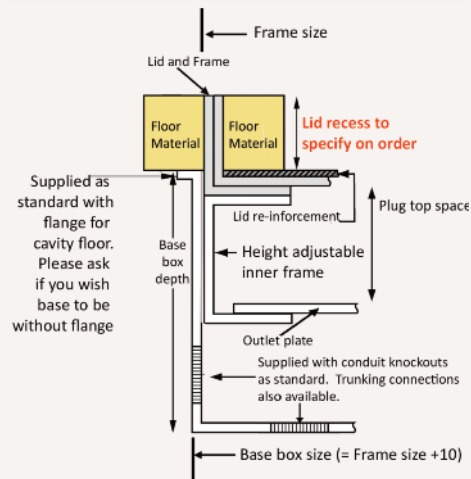


Flap option  
 Standard handle and flap  
 with name and logo

Frame option  
 Standard trimless finish

Inner frame option  
 Height adjustable inner frame  
 ensures perfect on site  
 levelling.  
 30mm overall height gives

Base box option  
 85mm deep base  
 20 & 25mm conduit knockouts



*Optional Extras*

- SBOX-700+BR      Extra to supply box in 2mm brass, with 4mm thick infill plate to withstand larger loads
- SBOX-700CLHANST      Extra to supply the handle without the Cableduct name
- SBOX-700NOLOGO      Extra to supply the flap without the Cableduct logo
- SBOX-700-FLTLID      Extra to a flat instead of recessed lid
- SBOX-700-LOCK      Extra to supply lid and frame with a cam lock
- SBOX-700-BRONZE      Extra to a supply with Antique Bronze coating
- SBOX-700-BR-AB      Extra to a supply with Antique Brass coating
- SBOX-700-BR-JB      Extra to a supply with Jordan Bronze coating
- SB7068-RETRO      Retro style base box fitting entirely within frame

