

700 FLOOR BOX

Round, Retrofit, Trim Flange - Stainless Steel/Brass

Classic · With CD logo · Solid-cast handle & flap · Made-to-order · Discreet

LID

- Robust lid made of brass or stainless steel
- Lid with made to order lid recess. Recess depths of 3mm-30mm to match exact final floor depth and adhesive required and ensure perfectly-level final floor
- Solid-cast handle and flap with discreet CD logo (1 outlet flap as standard)
- Lid-frame with trim flange. *Trimless lid-frame as standard.* Trim flange is cosmetic only and not load-bearing. It can be used to cover expansion gaps/inaccurate cutting
- Trim flange is proud of floor but can be rebated-in by installer to make flush with surrounding floor
- Special finishes: antique bronze, jordan bronze, antique brass, powder-coated to RAL colour of choice, mirrored
- Extra strength lid and flat lid *available as Options*



Stainless steel

FLOOR BOX

- Round. Rectangular and Square also available as standard
- 3 sizes of lid ranging from 127mm to 289mm diameter, each with 3 standard-depth base box options. Bespoke shapes & sizes possible. Round lid fits on hexagonal/octagonal base boxes
- 1-3 compartments per floor box, matched to number of outlet plates
- Large choice of outlet plate configurations. Floor boxes can fit between 1-3 outlet plates



Brass

BASE BOX

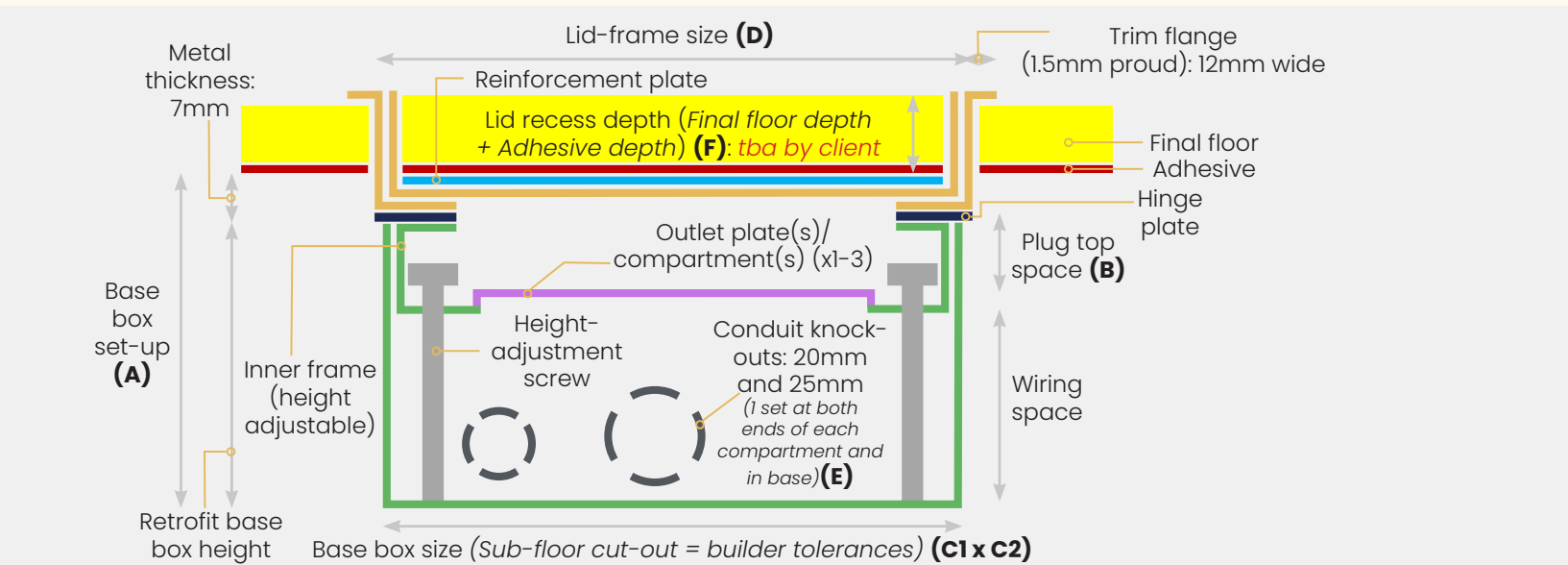
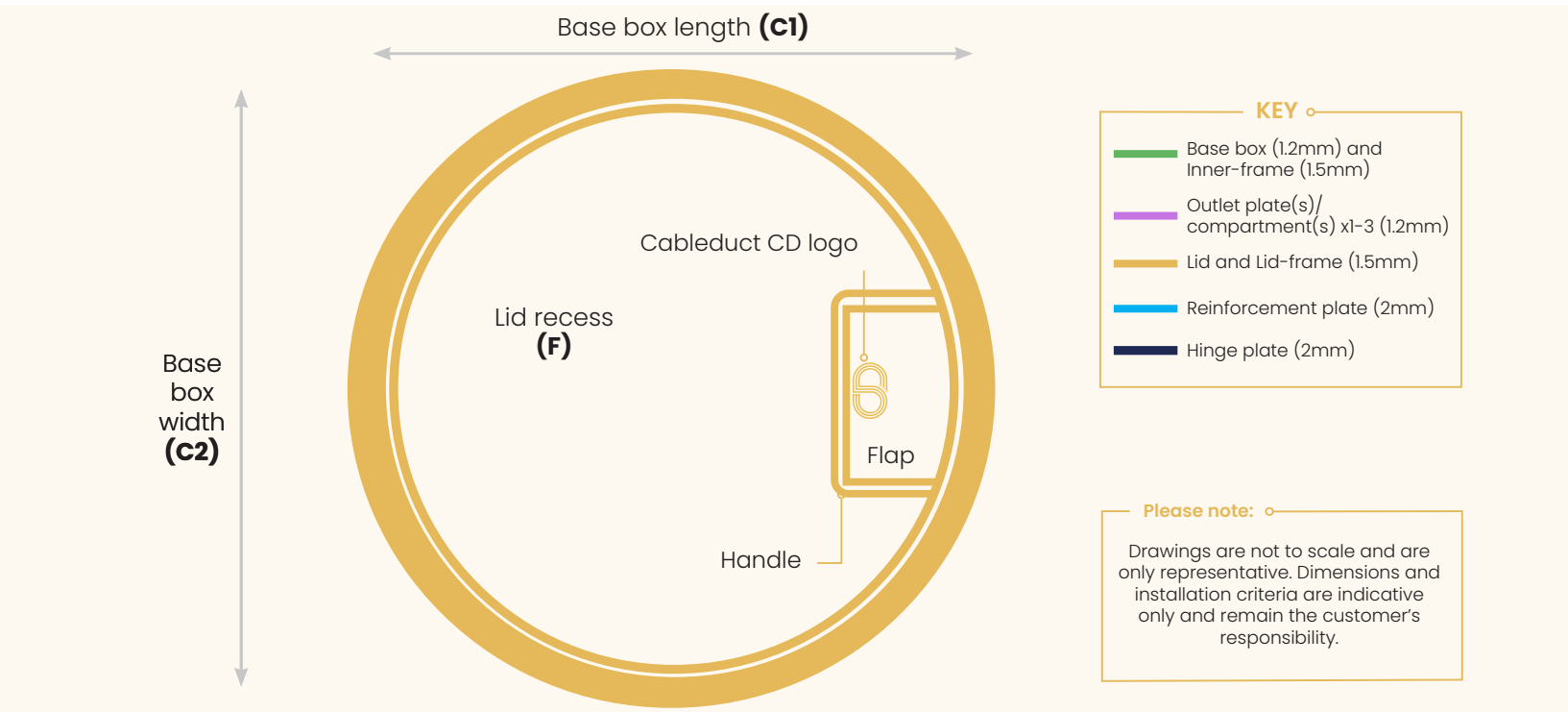
- Height adjustable inner frame gives perfect on-site levelling
- 3 standard base box set-ups of 65mm, 85mm and 120mm (see *dimension A*)
- Fixed plug-top space of 28mm to 68mm, depending on base box depth
- Wiring space varies depending on base box depth and plug-top space required
- Robust base box made of galvanised steel. Needs site support in suspended floor set-up when final floor is already laid
- Conduit cable feed only, as standard
- Retrofit base box used if floor box installed after final floor or if poured finish (i.e. polished screed or poured terrazzo). Standard assembly floor box required if installing base box before final floor fitted and if solid floor



Trimless shown

PRODUCT RANGE

Product Name	No. of compartments/ outlet plates	Base box set- up (mm deep)	Plug top space - max (fixed) (mm)	Base box size (mm)	Lid-Frame size (mm)	Feed type	Recess: Min-Max (mm)
		A	B	C1 x C2	D	E	F
SBOX-7RSR-65	1	65	28	127x127	127	Conduit	3-30
SBOX-7RSR-85	1	85	38	127x127	127		3-30
SBOX-7RSR-120	1	120	68	127x127	127		3-30
SBOX-7ROR-85	2	85	38	193x193	193		3-30
SBOX-7ROR-120	2	120	68	193x193	193		3-30
SBOX-7RLR-65	3	65	28	289x289	289		3-30
SBOX-7RLR-85	3	85	28	289x289	289		3-30
SBOX-7RLR-120	3	120	68	289x289	289		3-30




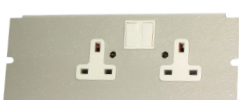
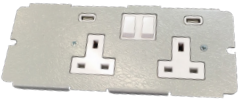



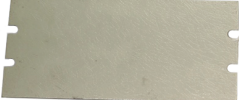
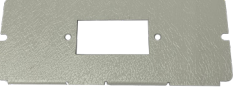

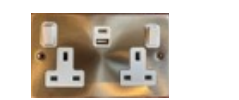


OUTLET PLATE CONFIGURATIONS FOR POWER & DATA





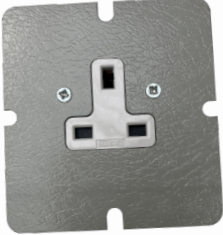
2 + 3 compartment boxes

KEY

- 65+** for shallower 65mm base boxes (side-wired)
- 85+** for deeper 85mm and 120mm base boxes
- 85+(65)** for deeper 85mm and 120mm base boxes but can work with 65mm base boxes depending on module
- 3c** for 3 compartment boxes only
- 3c(2c)** 2 compartment has 1 module only

Outlet plates (3c=161x75mm; 2c=122x62mm)	Ref.	Outlet plates (3c=161x75mm; 2c=122x62mm)	Ref.
 2x Euromod 50x50 module 85+(65), 3c(2c)	7RO-59; 7ROR59	 4x LJ6C cut outs (22.4x36.4mm) 85+(65)	7RO91; 7RO-R91
 2x 5A unswitched	7RO-76; 7RO-R76	 2x 13A switched 85+, 65+, 3c	7RO54
 2x 13A switched with 2x USB-A 85+, 3c	7RO54- 2USB	 2x 13A switched 1x USB-A & 1x USB-C 85+, 3c	7RO54- USBAC
 2x 13A with latching RCD 85+	7RO61; 7RO-R61	 2x 13A unswitched	7RO55; 7RO-R13A
 Blank Plate double	7RO-01; 7RO-R01	 Plate to accept 1x US Decora duplex panel mount 85+	7RO71; 7RO-R71
 1x 13A switched & 1x euromod 50x50 module 85+, 65+, 3c	7RO78	 Bespoke plates available	

Single socket boxes

Outlet plates (80x73mm)	Ref.	Outlet plates (80x73mm)	Ref.
 1x Euromod 50x50 module 85+(65)	7RS-R59	 1x 5A unswitched	7RS-R76
 2x LJ6C cut outs (22.4x36.4mm) 85+(65)	7RS-R91	 Blank Plate single	7RS-R01
 1x 13A unswitched 85+(65)	7RS-R13A		

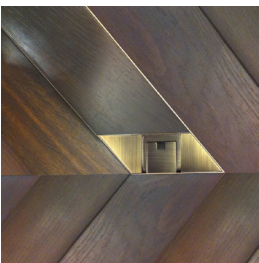
SHAPE



Rectangular **(as standard)**



Square **(as standard)**



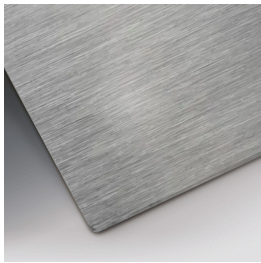
Bespoke

FINISH

Standard finishes

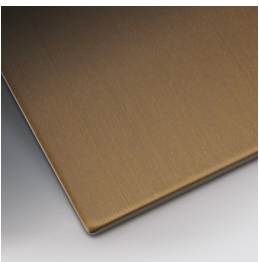


Brass-Satin

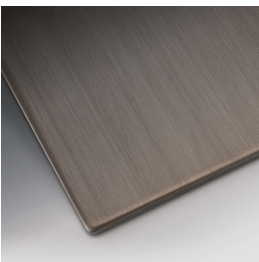


Stainless Steel-Satin

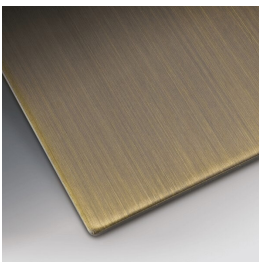
Special finishes



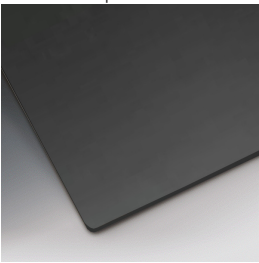
Antique Bronze
lacquer finish



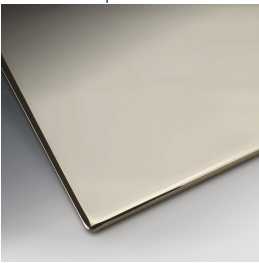
Jordan Bronze
lacquer finish



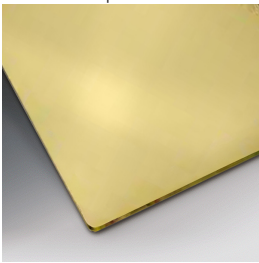
Antique Brass
lacquer finish



Powdercoat finish to most
RAL colours, including:
Bronze, Black



Mirror polished stainless
steel



Mirror polished brass

OPTIONS



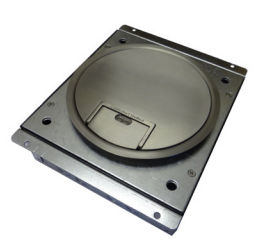
Mousehole cable exit



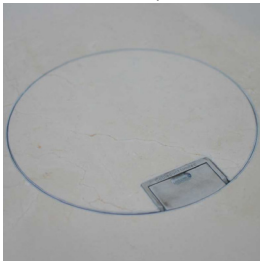
Flat lid (metal top; no
recess)



Extra strength lid



Standard Assembly



Trimless