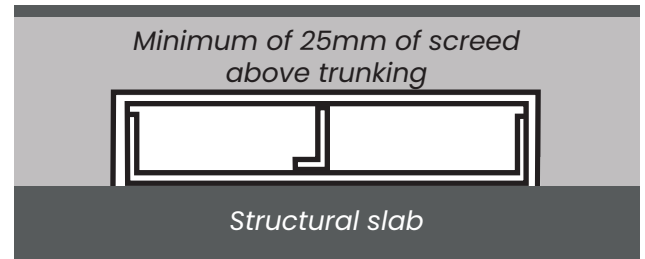


Comprehensive · Robust · Integrated · Junction & Floor box-compatible

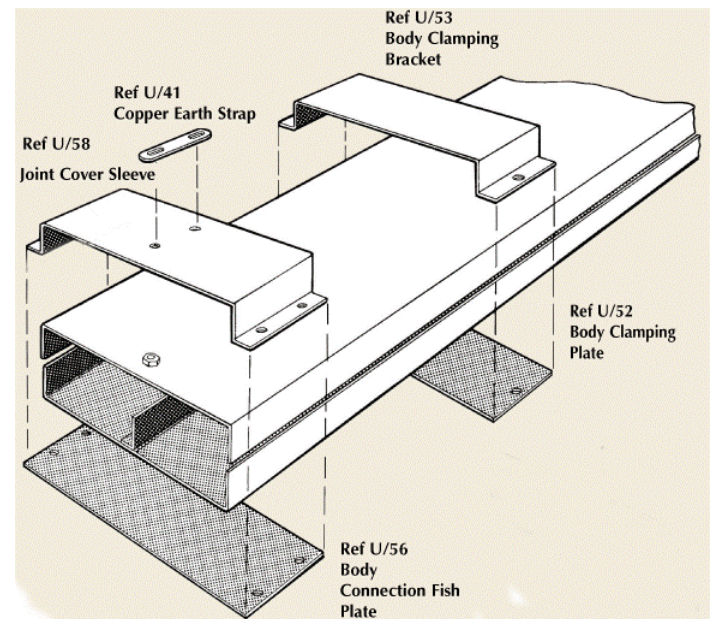
IN SCREED TRUNKING SYSTEM

- Designed to be buried in the floor screed and laid and wired prior to screeding
- Services then brought out through junction and floor boxes
- Comprehensive and easy-to-install trunking system, with 4 basic components: Trunking, Service/Outlet boxes, Junction boxes, Vertical access
- Trunking integrates fully with our service box range when there is a minimum screed depth of 65mm
- Junction boxes make changes in direction possible and allow access to wiring services



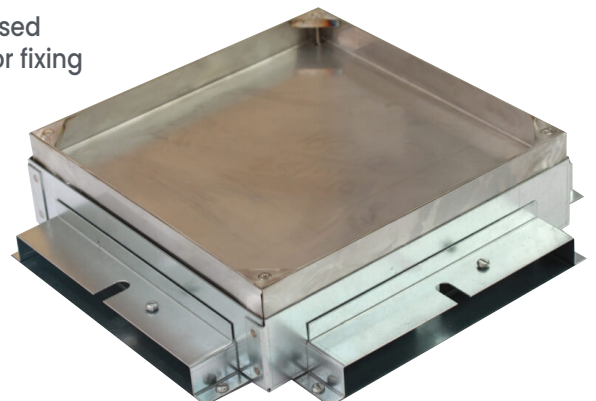
TRUNKING

- Robust trunking (1.2mm galvanised steel) for use in screed from 55mm deep
- Standard trunking sizes from 150x25mm to 225x25mm
- 2-3 compartments possible, with fixed dividers
- Trunking lengths are 2m long and come complete with necessary clamp and body connectors
- No exact levelling of the trunking is required
- Vertical riser bends enable integration with our perimeter trunking
- Bespoke trunking solutions available



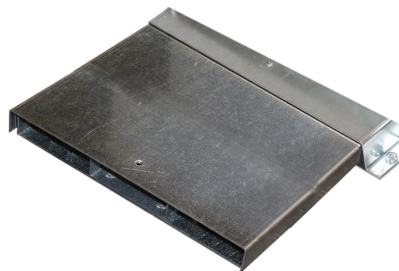
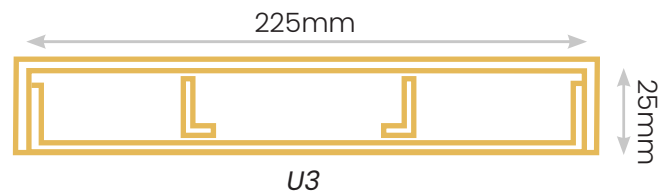
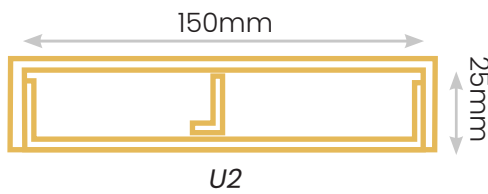
JUNCTION BOXES

- Order junction box to suit the minimum expected screed height - standard base box depths are 65mm, 85mm and 120mm
- Finish to be matched to final floor covering and floor box finish
- Square in 2 sizes as standard, 200x200mm and 300x300mm. Bespoke available
- Lid recess can be any depth between 3mm-30mm. Standard is galvanised steel trimless lid with a shallow 6mm recess (fitted with 4x M8 bushes for fixing the lid and to allow future lifting)
- Lids available in stainless steel or satin brass with 4x corner blocks, to match Minima and 700 floor boxes. Trimless as standard or with trim flange as option
- Junction box supplied with flyover sets for segregation and height-adjustable inner frame for perfect on-site levelling
- Alternative bespoke finishes available for recessed lids: antique bronze, jordan bronze, antique brass, powder-coated
- Available as option: Flat junction box lid secured by 4x countersunk screws in corners



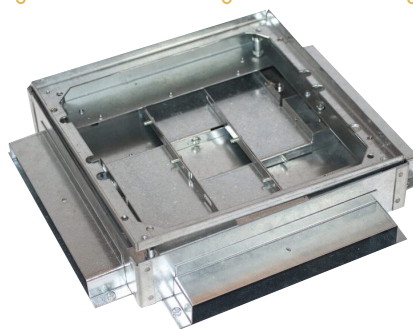
TRUNKING DETAILS

Trunking type (ref. 91)	Overall Width x Depth (mm)	Length (mm)	No. of Compartments	Junction/Outlet/floor box integration
U2	153x26.5	2000	2	All via spigot
U3	228x26.5	2000	3	



JUNCTION BOXES

Junction box type (ref.)	U2 junction box size (mm)		U3 junction box size (mm)		Base box depth (mm)
	Lid-frame	Base box	Lid-frame	Base box	
Cross (94)	200x200	Standard assembly: 210x210 Retrofit: 200x200	300x300	Standard assembly: 310x310 Retrofit: 300x300	65/85/120
Tee (95)					
Angle (96)					
Through (97)					
Terminal (98)					

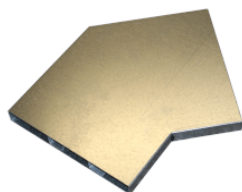


Junction box

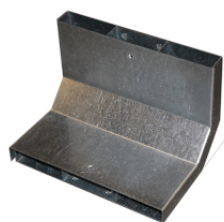
ACCESSORIES



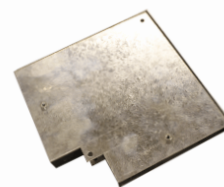
End Cap (38)



45deg. bend (45)



Vertical bend (92)



Horizontal bend (93)