

Discreet access to power & data at the right height · Robust · Flexible

LIDS

- Steel lid (1.2mm), and standard finishes include: powder-coated, white (white pre-coated steel with a galvanised substrate), galvanised steel, stainless steel. Other finishes available on request; including satin brass
- Lid tops can be either square or chamfered
- Lid profiles differ at the bottom depending on product type: *skirting* - no bottom return; *dado* - full depth bottom return
- All lids can be moved into any position, allowing service outlet parts to be placed wherever needed and can be easily moved after initial installation to accommodate changes in layout at any time



PERIMETER TRUNKING

- Robust trunking body in galvanised steel (1.2mm)
- Extensive range of standard trunking in 2m lengths, ranging from 150x40mm to 200x50mm, 2-3 compartments possible, with fixed dividers
- Rapid and easy installation with fixings included. Threaded connectors so no need for nuts
- Extensive range of standard accessories to eliminate on-site fabrication. Odd angle bends and pier sets can be custom-made to site specification
- Cover strap fixings for standard profiles allow on-site cuts to be covered easily
- Trunking dividers are provided with 20mm knock-outs at 200mm centres to ensure easy positioning of outlets at any location
- Trunking is designed to have socket outlets at one level (except J3) and knockouts in the partition enable bodies to be fitted prior to the wiring layout being finalised. Socket outlet plates are then placed where required
- Full segregation between power and data using steel dividers. For outlet plates fed by an outer compartment, the partition knockout is removed and a screening saddle (ref.72) is fitted in its place to provide back box segregation



BENCH TRUNKING

- Low-profile trunking with sloping lid
- Sized 100mm deep x100mm high with top return of 25mm
- Trunking, lids and accessories as per perimeter trunking



PERIMETER TRUNKING DETAILS



Dado profile
(full depth
bottom return)



Skirting profile
(No bottom
return)

Perimeter Trunking type	Image	Body (50)	Lid (51)	Lid-top shape	Depth (mm)	Height (mm)	Length (mm)	No. of Compartments	Height-compartment split (mm)
Dado		J2	J2	Square top	40	150	2000	2	40/110
Skirting			H2						
Dado		DD3	DD3	Square top	50	150	2000	3	37.5/75/37.5
Skirting			H3						
Dado		J3	J3	Square top	40	200	2000	2	100/100
Skirting		K2	K2	Chamfered top	40	200		3	50/100/50
Dado		DD4	DD4	Square top	50	200	2000	3	50/100/50
Skirting			H4						
Dado		KK4	KK4	Chamfered top & bottom	50	200	2000	3	50/100/50

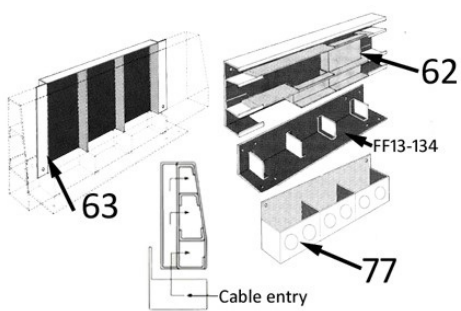
BENCH TRUNKING DETAILS

Product type	Image	Body (50)	Lid (51)	Lid-top shape	Depth (mm)	Height (mm)	Length (mm)	No. of Compartments	Height-compartment split (mm)
Bench		V1	V1	Chamfered	100	100	2000	1-2	N/A

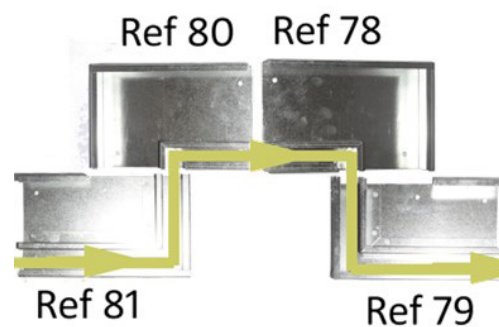
PRODUCT ACCESSORIES

Entries (ref)	Base entry	Back entry	Cable / Conduit entry
Perimeter trunking:	62	63	77

Bends (ref)	Flat bend - right hand (down)	Flat bend - right hand (up)	Flat bend - left hand (down)	Flat bend - left hand (up)
Perimeter trunking:	78	79	80	81



Entry-base, back, cable



Flat bends

Accessories (ref)	End cap	Copper earth strap
Perimeter Trunking	59	C41
Bench Trunking	159	C41

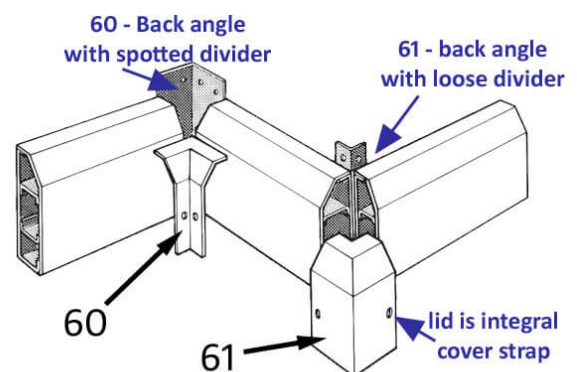
Bends (ref)	Internal bend (Body and Lid)	External bend (Body and Lid)
Perimeter Trunking	60	61
Bench Trunking	162	163



End cap



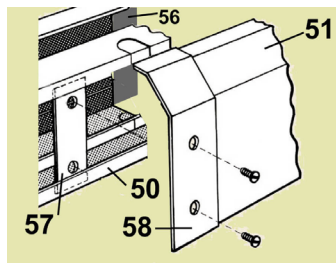
C41



Internal & External bends

PRODUCT ACCESSORIES

Fixings (ref)	Body	Lid	Body fixing plate (with body ref. 50)	Lid fixing - back strap (pair with cover strap ref.58)	Lid fixing - cover strap (pair with back strap ref.57)
				Supplied with all lid items	Supplied with all lid items
Perimeter Trunking	50	51	56	57	58
Bench Trunking	50	51	156	157	158

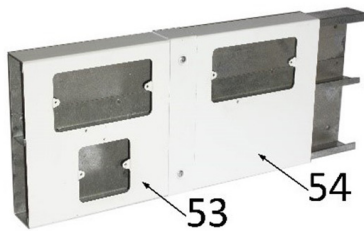


Body, lid & fixings

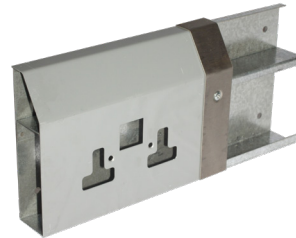
Outlets (ref)	Outlet - 1 gang	Outlet - 1 + 2 gang (J3 only)	Outlet - 2 gang	Panel mounted twin socket	Outlet screening saddle (excl. J3)
Perimeter Trunking	52	53	54	64	72
Bench Trunking	152	N/A	154	VI-174	VI-172



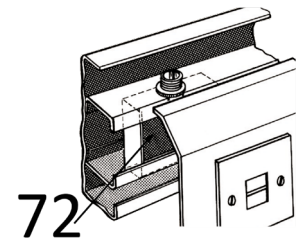
Outlet - 1 gang (52)



Outlet - 1 + 2 and 2 gang



Panel mounted twin socket (64)



Outlet screening saddle

FIXINGS INCLUDED

Body (50)

Each length of trunking body (50):

- 1x Back plate connector (56)
- 4x M5 x 6mm panhead screws and washers

Bend (60/61)

Each bend comes with:

- 1x body (61 is a back angle with loose dividers)
- 1x lid
- 1x fixing strap (57) to suit
- 1x or 2x M5 x 20mm pozi screws
- 4x M5 x 6mm pan head screws for body

Lid (51) and Socket Lid (52, 54)

Each length of trunking lid (51) / socket lid (52, 54):

- Fixing strap (57) to suit
- Cover strap (58) to suit
- 1x or 2x M5 x 20mm pozi screws to suit fixing strap

Outlet screening saddle (72) (excl J3)

Each screening saddle (72) comes with:

- 1x screening back box
- 1x lock nut
- 1x lock ring
- 1x M5 x 6mm panhead screw