

# ACCESS GROMMET

Retrofit, with Trim flange - Stainless Steel/Brass

Made-to-Order · Discreet · Metal · Robust

## RETROFIT ACCESS GROMMET

- An access grommet is for access only, no power or data sockets are fitted within the grommet
- For cavity floor installations only
- Retrofit access grommet is installed if final floor has already been fitted or if poured finish
- Standard access grommet *available as Option (trimless)* if installation will be before final floor fitted
- Access grommet closer *available as Option* to suit 127mm and 193mm diameter lids only. Closer covers the lid access hole when grommet is not in use and located in areas with foot traffic



Brass

## LID

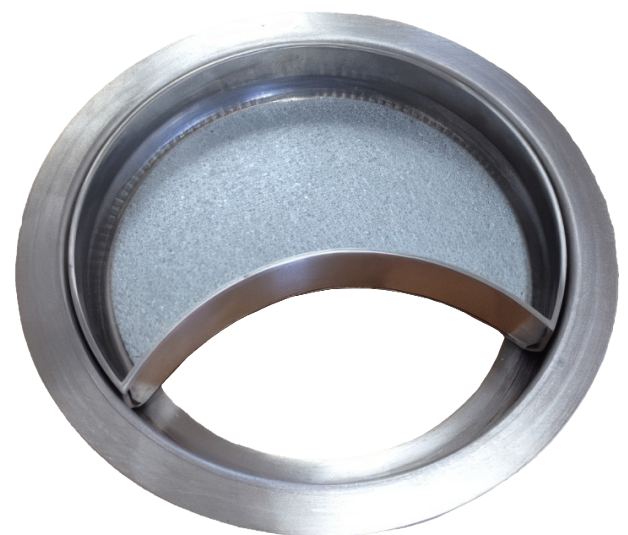
- Lid-frame with trim flange, as standard. Site provision must be made regarding support as boxes are not self-supporting
- 'Always open' with lid access hole, as standard
- Round lid in 3 sizes: \*127mm, 193mm and 289mm diameter. Lid fits on mounting frame (\*127mm size not recommended if hands need to pass through to reach into void)
- Robust 'loose-lay' (no hinge) lid made of brass or stainless steel
- Lid with made to order lid recess. Recess depths of 3mm-30mm to match exact final floor depth (including adhesive layer) and to ensure perfectly-level final floor. *Flat lid available as Option*
- Trim flange is proud of floor but can be rebated in by installer to make flush with surrounding floor
- Standard finishes: satin Brass and satin Stainless Steel. Special finishes: Antique Bronze, Jordan Bronze, Antique Brass, Powder-coated to RAL colour of choice



Stainless steel

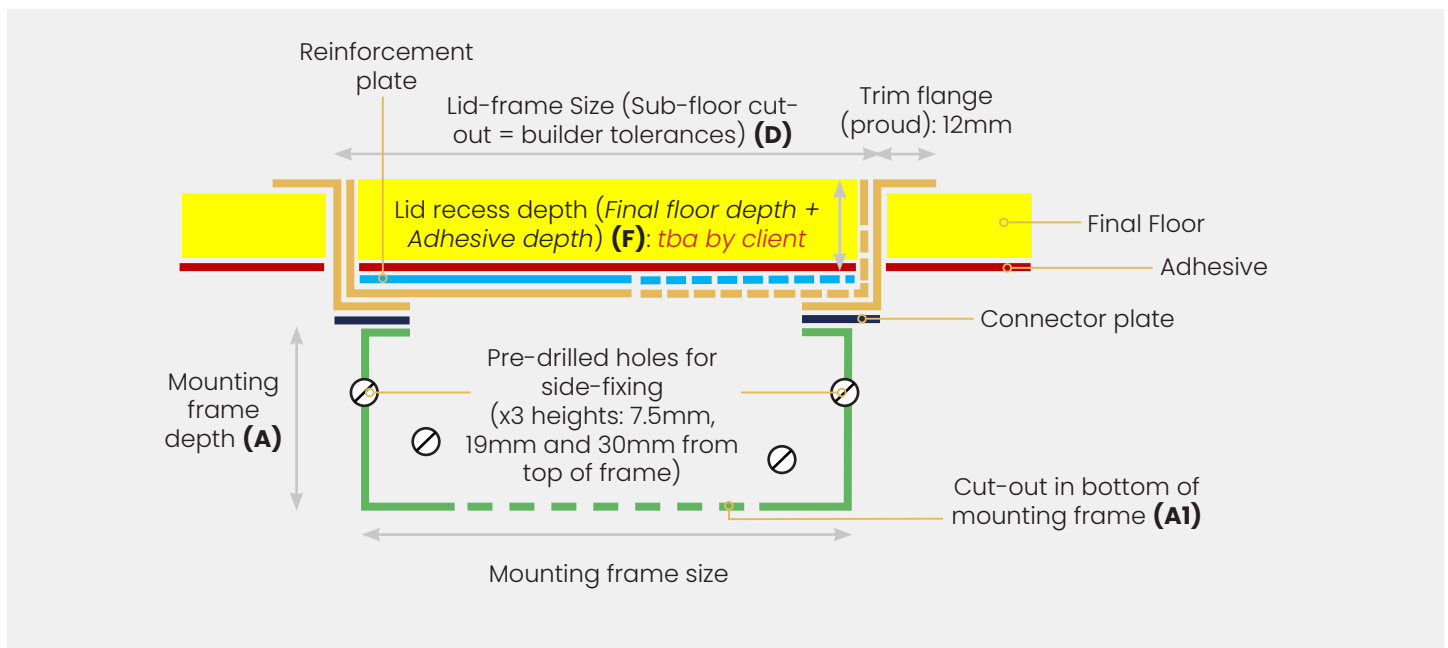
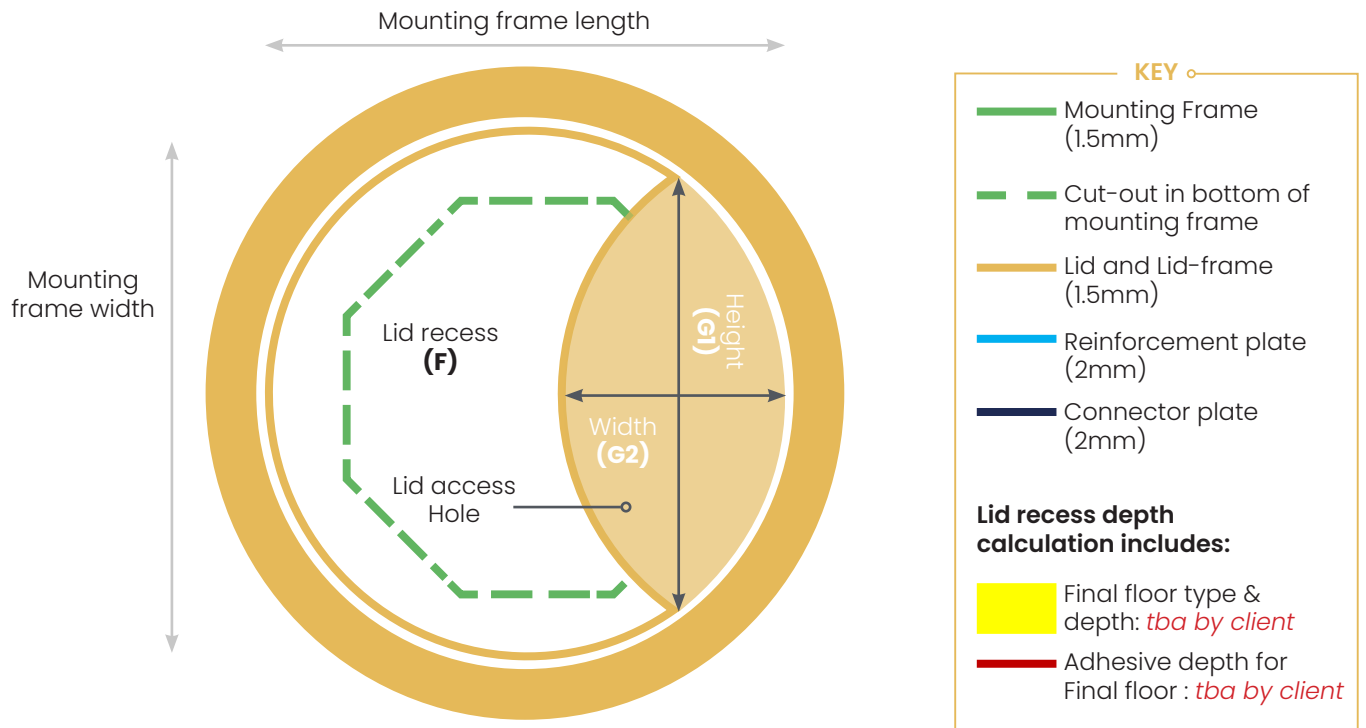
## MOUNTING FRAME

- Robust mounting frame is made of galvanised steel and is recommended for retrofit grommets to provide support, dimensional strength and stability
- Supported by side-fixing using pre-drilled holes in side of mounting frame. Holes are at different heights to facilitate perfect on-site levelling and 2 fixing points on opposite sides are recommended as part of site-provided support solution
- 40mm mounting frame depth
- Bottom of mounting frame has cut-out for easy access to void



# PRODUCT RANGE

Product Name	Mounting frame depth (mm)	Cut-out size (at widest; mm)	Lid-frame diameter (mm)	Recess: Min-Max (mm)	Lid access hole size: length x width (mm)
	<b>A</b>	<b>A1</b>	<b>D</b>	<b>F</b>	<b>G1 x G2</b>
GROM-RS R	40	92x72	127	3-30	100x55
GROM-ROR	40	163x121	193	3-30	120x60
GROM-RL R	40	222x140	289	3-30	165x73



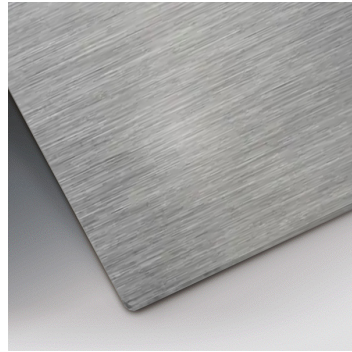
**\*Please note:** Drawing and cross-section are not to scale and are only representative. Dimensions and installation criteria are indicative only and intended to aid customer planning. Exact installation dimensions and actions remain the customer's responsibility.

# FINISHES

## Standard finishes

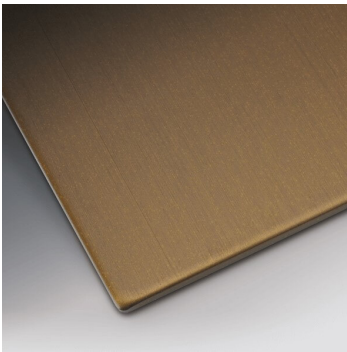


Brass-Satin

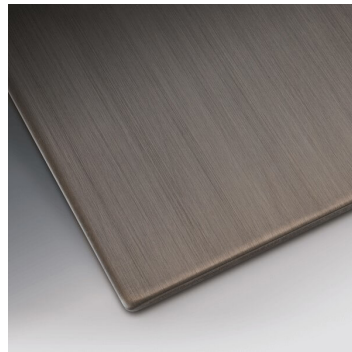


Stainless Steel-Satin

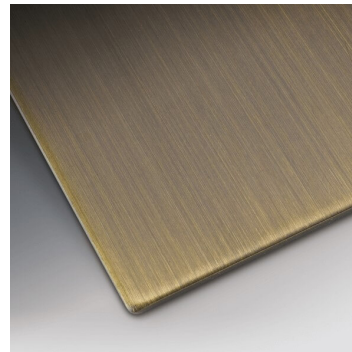
## Special finishes



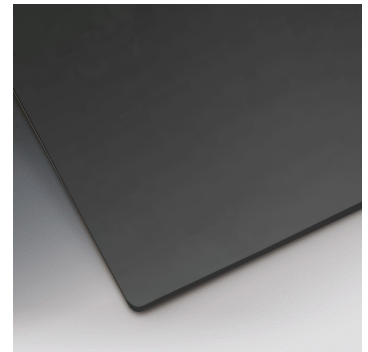
Antique Bronze  
lacquer finish



Jordan Bronze  
lacquer finish



Antique Brass  
lacquer finish

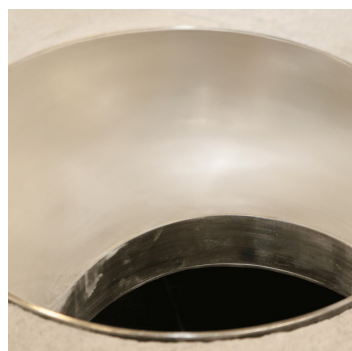


Powdercoat finish to most  
RAL colours, including:  
Bronze, Black

# OPTIONS



Standard access grommet,  
trimless



Flat Lid  
(metal top; no recess)  
(Trimless shown)



Closer  
(to cover lid access hole  
when access grommet is not  
in use and located in areas  
with foot traffic)  
(Trimless and flat lid shown)