

# ACCESS GROMMET

Standard Assembly, Trimless - Stainless Steel/Brass

Made-to-Order · Discreet · Metal · Robust

## ACCESS GROMMET

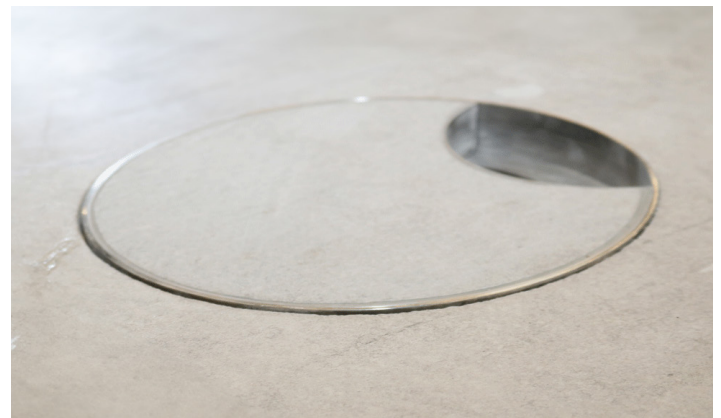
- An access grommet is for access only, no power or data sockets are fitted within the grommet
- For cavity floor installations only
- Install grommet before final floor fitted, as standard
- Retrofit access grommet *available as Option (only with trim flange)* if grommet will be installed after final floor or if final floor is a poured finish
- Access grommet closer *available as Option* to suit 127mm and 193mm diameter lids only. Closer covers the lid access hole when grommet is not in use and located in areas with foot traffic



Brass

## LID

- Trimless lid-frame as standard
- 'Always open' with lid access hole, as standard
- Round lid in 3 sizes: \*127mm, 193mm and 289mm diameter. Round lid fits inside base box (\*127mm size not recommended if hands need to pass through to reach into void)
- Robust 'loose-lay' (no hinge) lid made of brass or stainless steel
- Fully-flush lid with made to order lid recess. Recess depths of 3mm-30mm to match exact final floor depth (including adhesive layer) and to ensure perfectly-level final floor. *Flat lid available as Option*
- Standard finishes: satin Brass and satin Stainless Steel. Special finishes: Antique Bronze, Jordan Bronze, Antique Brass, Powder-coated to RAL colour of choice



Stainless steel

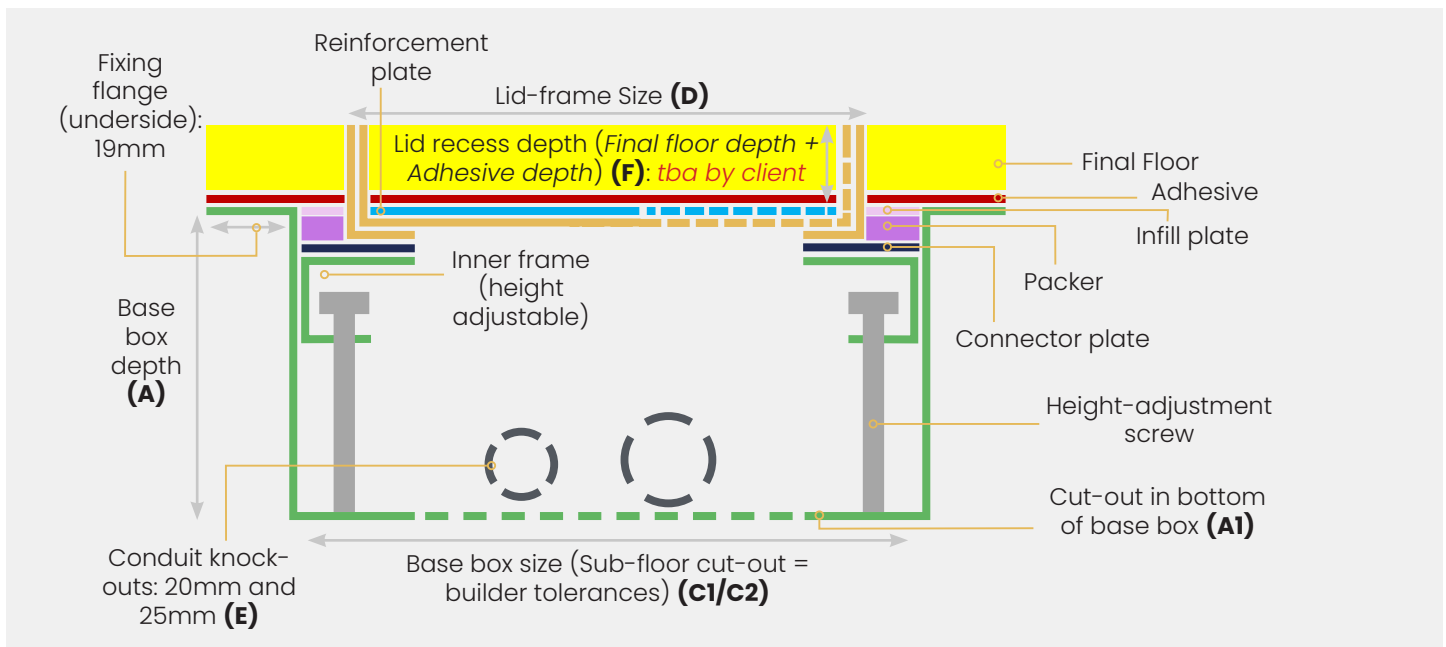
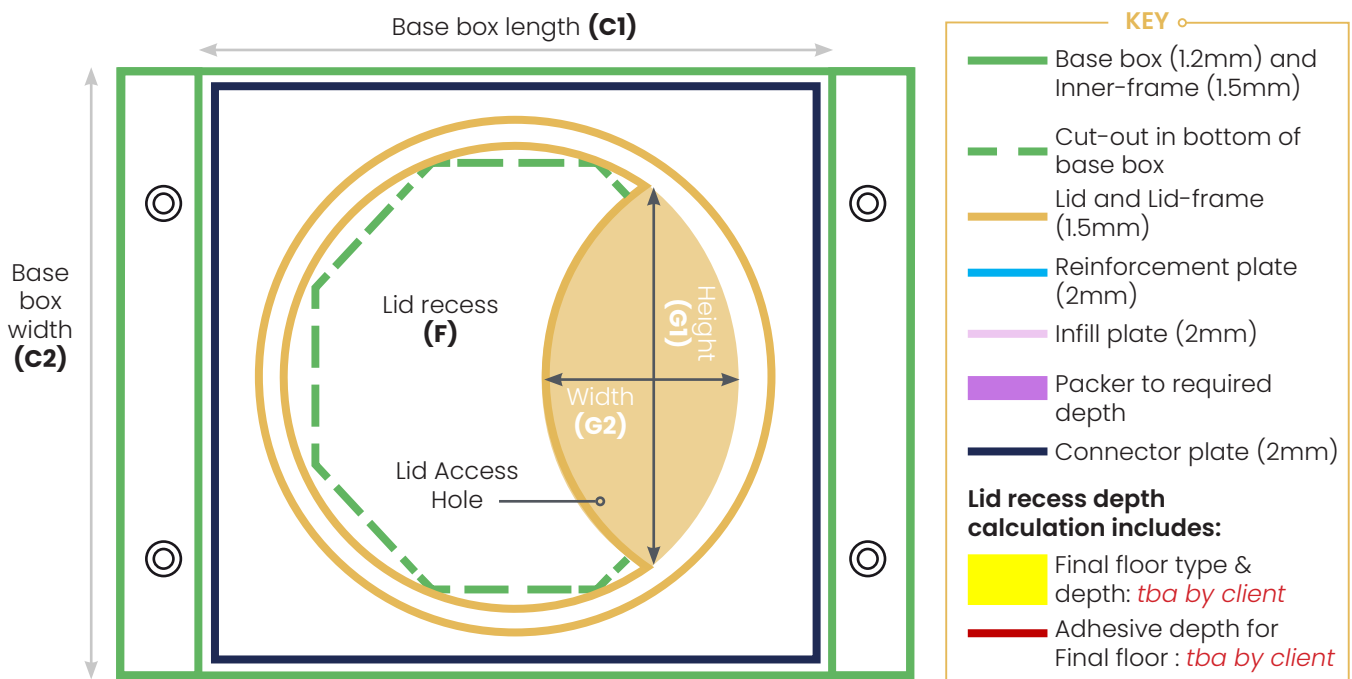
## BASE BOX

- Robust base box is made of galvanised steel and is recommended for all grommets to provide support, dimensional strength and stability
- Height adjustable inner frame for on-site levelling (downwards adjustment only)
- 65mm base box depth
- Required to be supported under both fixing flanges
- Bottom of Base box has cut-out for easy access to void



# PRODUCT RANGE

Product Name	Base box depth (mm)	Cut-out size (mm)	Base box size (mm)	Lid-frame size (mm)	Feed type	Recess: Min-Max (mm)	Lid access hole size: length x width (mm)
	<b>A</b>	<b>A1</b>	<b>C1 x C2</b>	<b>D</b>	<b>E</b>	<b>F</b>	<b>G1 x G2</b>
GROM-RS	65	105x105	160x160	127	Conduit	3-30	100x55
GROM-RO	65	175x192	243x260	193	Conduit	3-30	120x60
GROM-RL	65	240x240	310x310	289	Conduit	3-30	165x73



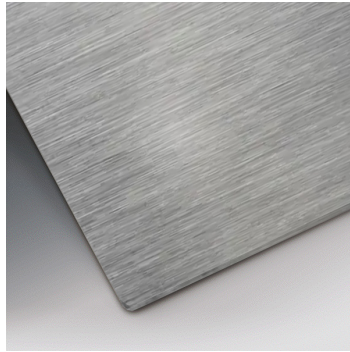
**\*Please note:** Drawing and cross-section are not to scale and are only representative. Dimensions and installation criteria are indicative only and intended to aid customer planning. Exact installation dimensions and actions remain the customer's responsibility. Fixing flange is located on flap side or non-flap side depending on model type.

# FINISHES

## Standard finishes

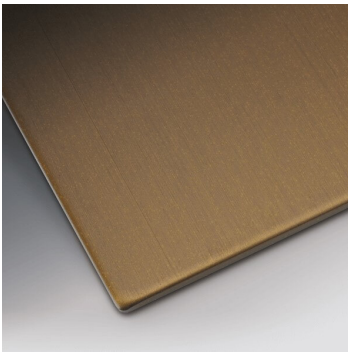


Brass-Satin

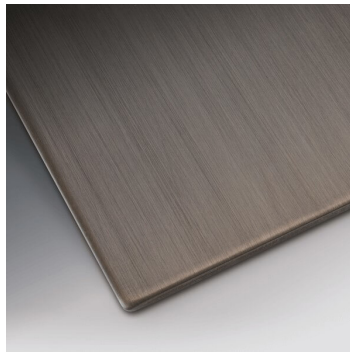


Stainless Steel-Satin

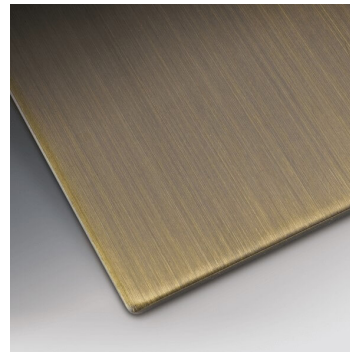
## Special finishes



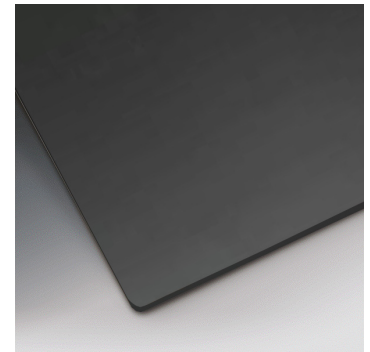
Antique Bronze  
lacquer finish



Jordan Bronze  
lacquer finish



Antique Brass  
lacquer finish

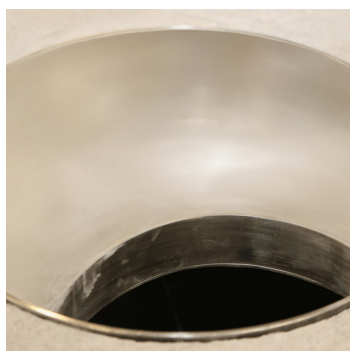


Powdercoat finish to most  
RAL colours, including:  
Bronze, Black

# OPTIONS



Retrofit access grommet,  
with trim flange



Flat Lid  
*(metal top; no recess)*



Closer  
*(to cover lid access hole  
when access grommet is not  
in use and located in areas  
with foot traffic)  
(Flat lid shown)*