

700 FLOOR BOX

Round, Standard Assembly, Trim Flange - Stainless Steel/Brass

Classic · With CD logo · Solid-cast handle & flap · Made-to-order · Discreet

LID

- Robust lid made of brass or stainless steel
- Lid with made to order lid recess. Recess depths of 3mm-30mm to match exact final floor depth and adhesive required and ensure perfectly-level final floor
- Solid-cast handle and flap with discreet CD logo (1 outlet flap as standard)
- Lid-frame with trim flange. *Trimless lid-frame as standard.* Trim flange is cosmetic only and not load-bearing. It can be used to cover expansion gaps/inaccurate cutting
- Trim flange is proud of floor but can be rebated-in by installer to make flush with surrounding floor
- Special finishes: antique bronze, jordan bronze, antique brass, powder-coated to RAL colour of choice, mirrored
- Extra strength lid and flat lid *available as Options*



Stainless steel

FLOOR BOX

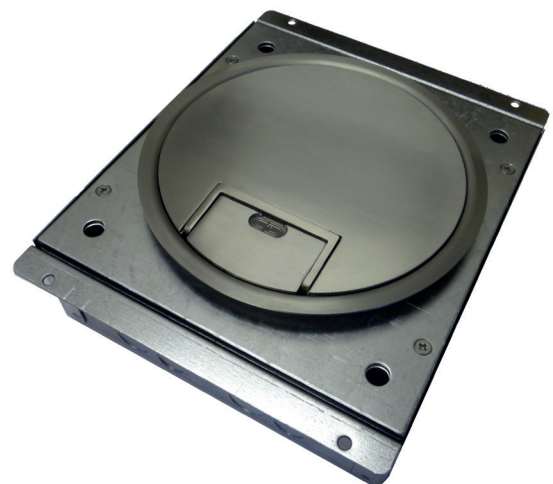
- Round. Rectangular and Square also available as standard
- 3 sizes of lid ranging from 127mm to 289mm diameter, each with 3 standard-depth base box options. Bespoke shapes & sizes possible. Round lid fits in rectangular/square base box
- 1-3 compartments per floor box, matched to number of outlet plates
- Large choice of outlet plate configurations. Floor boxes can fit between 1-3 outlet plates



Brass

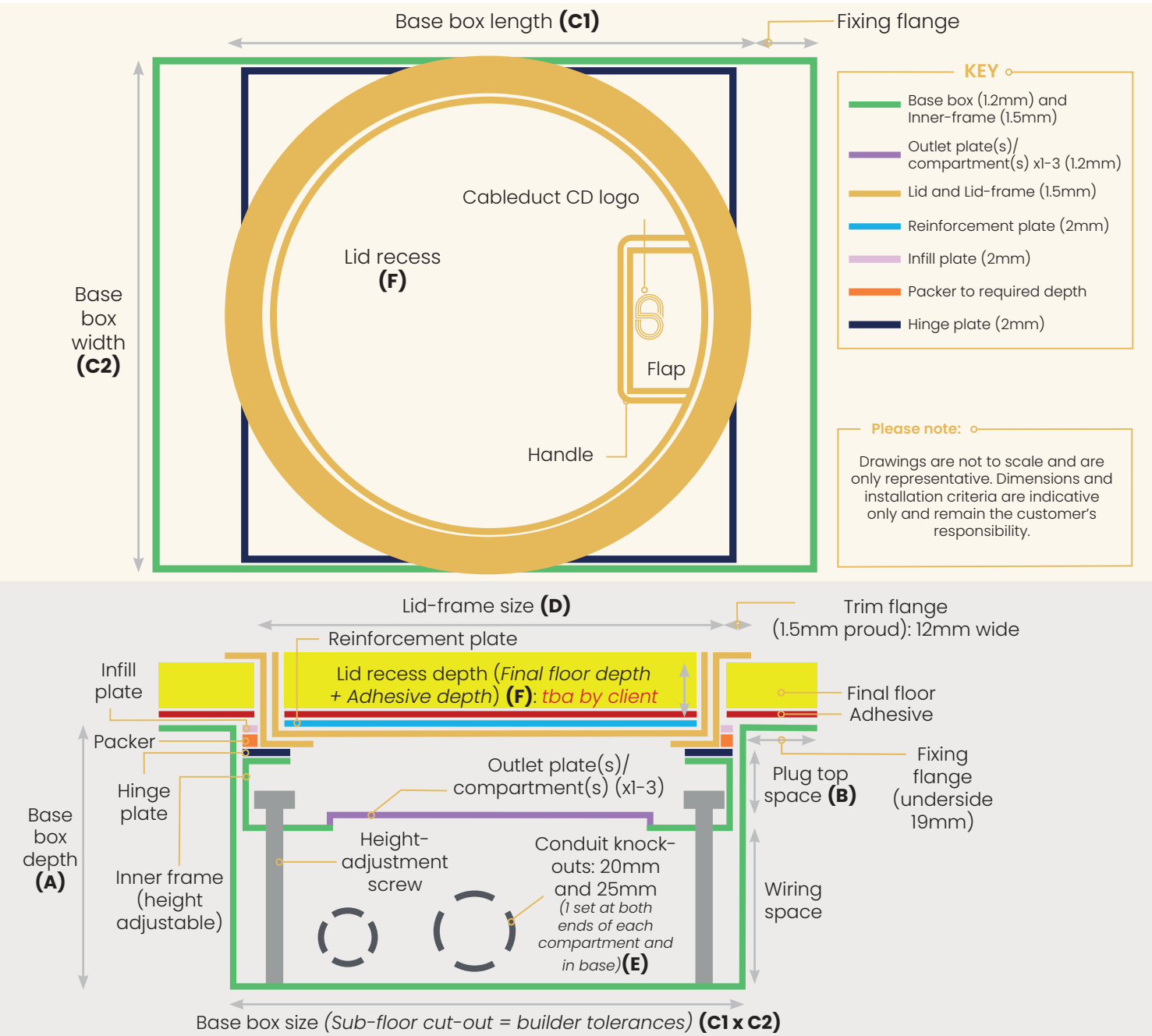
BASE BOX

- Height adjustable inner frame gives perfect on-site levelling
- 3 standard base box depths of 65mm, 85mm and 120mm
- Fixed plug-top space of 28mm to 68mm, depending on base box depth
- Wiring space varies depending on base box depth and plug-top space required
- Robust base box made of galvanised steel
- Interfaces with most cable feed types (only 2 and 3 compartment floor boxes integrate via spigot with in screed trunking)
- Install base box before final floor fitted as standard. Retrofit base box available as Option if floor box installed after final floor or if poured finish (i.e. polished screed or poured terrazzo)



PRODUCT RANGE

Product Name	No. of compartments/ outlet plates	Base box depth (mm)	Plug top space - max (fixed) (mm)	Base box size (mm)	Lid-Frame size (mm)	Feed type	Recess: Min-Max (mm)
		A	B	C1 x C2	D	E	F
SBOX-7RS-65	1	65	28	160x160	127	Conduit	15-30
SBOX-7RS-85	1	85	38	160x160	127		3-30
SBOX-7RS-120	1	120	68	160x160	127		3-30
SBOX-7RO-85	2	85	38	260x243	193	Conduit / Trunking - In screed	3-30
SBOX-7RO-120	2	120	68	260x243	193		3-30
SBOX-7RL-65	3	65	28	310x310	289		15-30
SBOX-7RL-85	3	85	28	310x310	289		3-30
SBOX-7RL-120	3	120	68	310x310	289		3-30



OUTLET PLATE CONFIGURATIONS FOR POWER & DATA




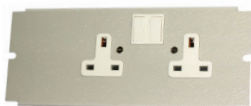
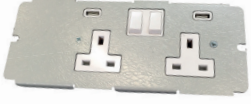







2 + 3 compartment boxes

KEY




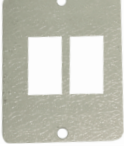





65+ for shallower 65mm base boxes (side-wired)

85+ for deeper 85mm and 120mm base boxes

85+(65) for deeper 85mm and 120mm base boxes but can work with 65mm base boxes depending on module

Outlet plates (161x75mm)	Ref.	Outlet plates (161x75mm)	Ref.
 2x Euromod 50x50 module 85+(65)	7RO59	 4x LJ6C cut outs (22.4x36.4mm) 85+(65)	7RO91
 2x 5A unswitched	7RO76	 2x 13A switched 85+, 65+	7RO54
 2x 13A switched with 2x USB-A 85+	7RO54-2USB	 2x 13A switched 1x USB-A & 1x USB-C 85+	7RO54-USBAC
 2x 13A with latching RCD 85+	7RO61	 2x 13A unswitched	7RO55
 Blank Plate double	7RO01	 Plate to accept 1x US Decora duplex panel mount 85+	7RO71
 1x 13A switched & 1x euromod 50x50 module 85+, 65+	7RO78	 Bespoke plates available	

Single socket boxes

Outlet plates (95x87mm)	Ref.	Outlet plates (95x87mm)	Ref.
 1x 13A switched 85+, 65+	7RS-75W	 1x Euromod 50x50 module 85+(65)	7RS-59
 1x 13A switched with USB-A 85+	7RS-75USB	 2x LJ6C cut outs (22.4x36.4mm) 85+(65)	7RS-91
 1x 5A unswitched	7RS-5AMP	 1x 13A unswitched 85+(65)	7RS-13A
 Blank Plate single	7RS01	 1x 13A unswitched & 1x LJ6C cut out 85+(65)	7RS-13RJ
 1x standard 1 gang aperture	7RS-581 GAN		

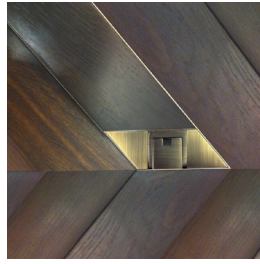
SHAPE



Rectangular (**as standard**)



Square (**as standard**)



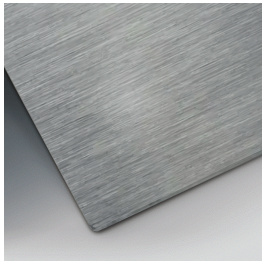
Bespoke

FINISH

Standard finishes

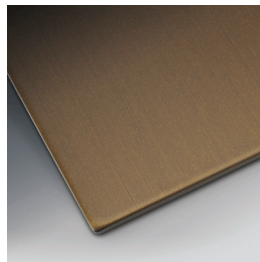


Brass-Satin

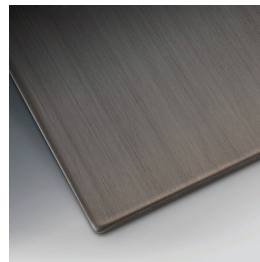


Stainless Steel-Satin

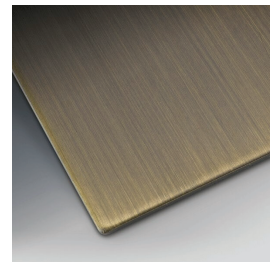
Special finishes



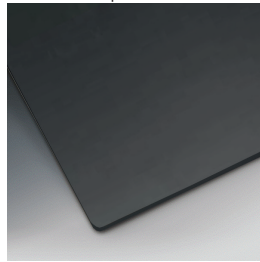
Antique Bronze
lacquer finish



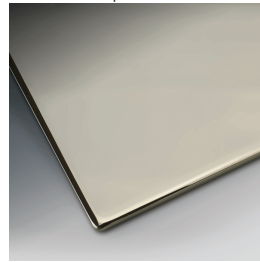
Jordan Bronze
lacquer finish



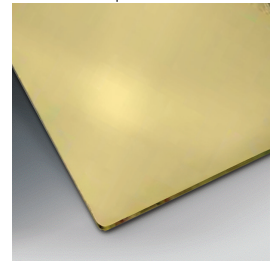
Antique Brass
lacquer finish



Powdercoat finish to most
RAL colours, including:
Bronze, Black



Mirror polished stainless
steel



Mirror polished brass

OPTIONS



Mousehole cable exit



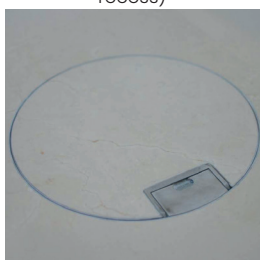
Flat lid (metal top; no
recess)



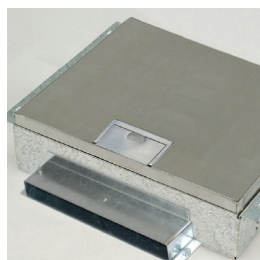
Extra strength lid



Retrofit
(Trimless shown)



Trimless



Spigot for in screed trunking
(Rectangular trimless
shown)