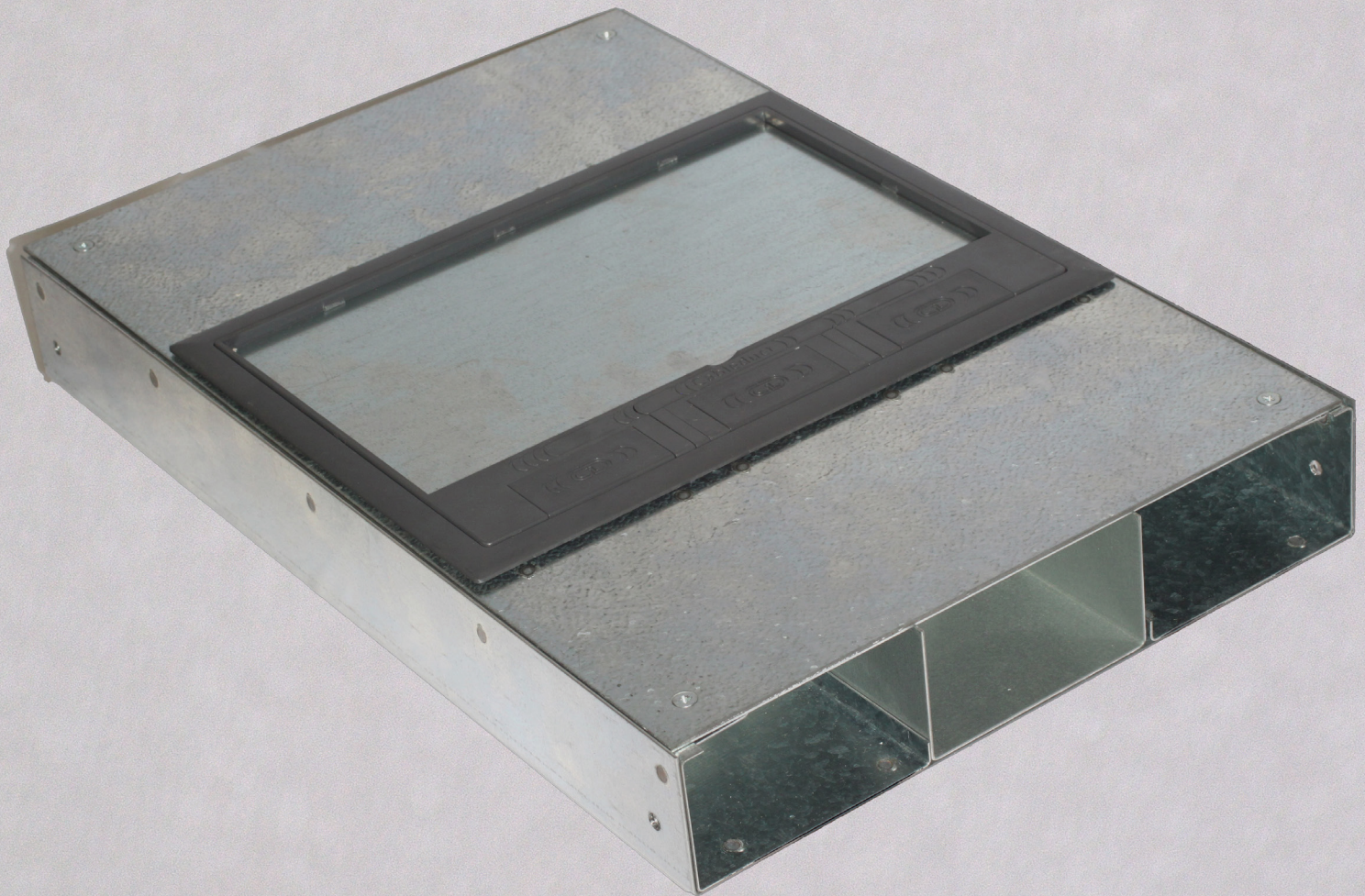


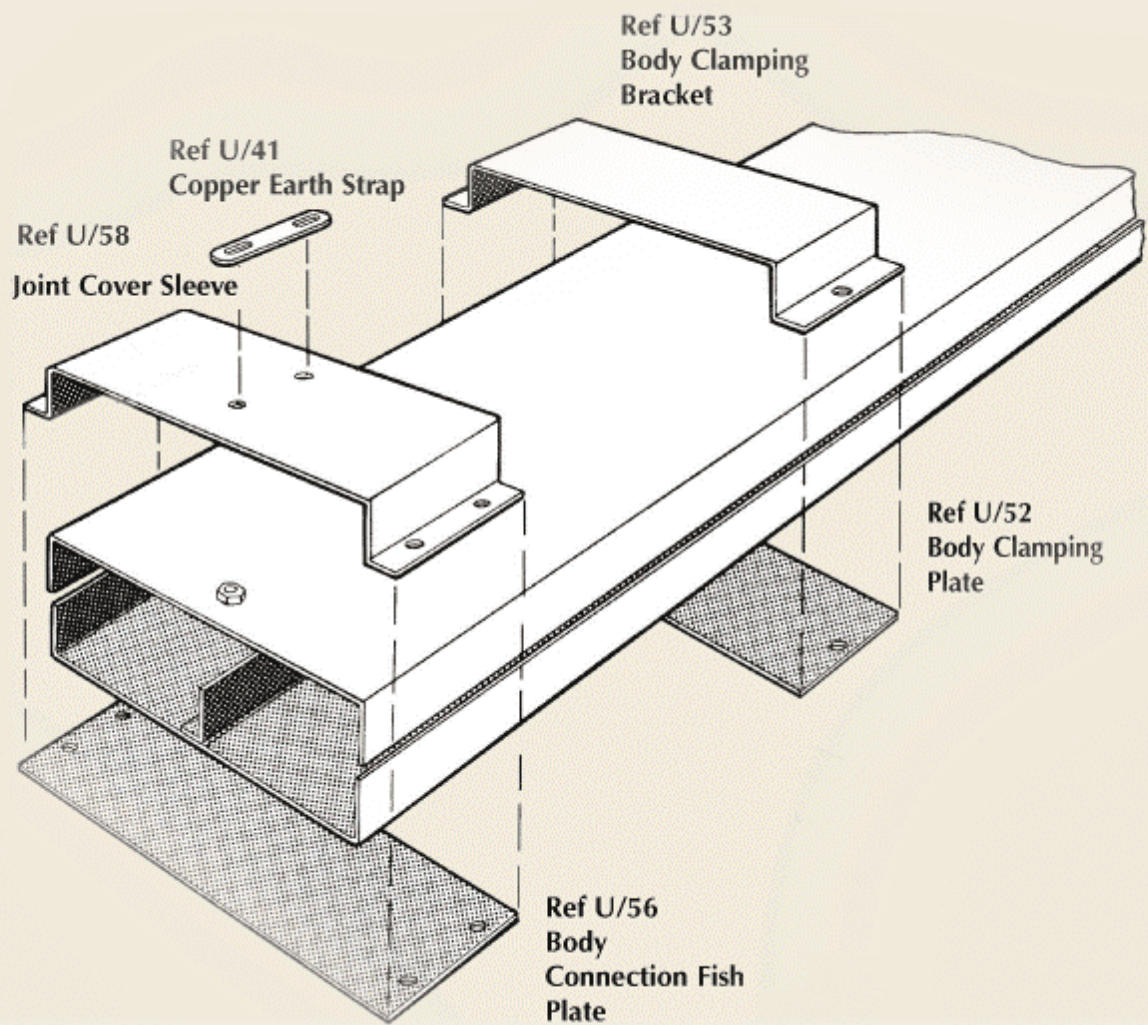


CABLEDUCT
— LIMITED —



TRUNKING OVERVIEW

CONTENTS



1	About Us	12	Surface Trunking
2	Underfloor In screed Trunking	14	Tailored Solutions
4	Flush floor Trunking	15	Floor Boxes
7	Perimeter and bench Trunking	16	Two premier floor box ranges
11	Pedestals	17	Floor box type and attributes

ABOUT US

THE UK'S LEADING CABLE MANAGEMENT EXPERTS

Cableduct manufactures premium quality trunking and floor box solutions. These range from standard products to tailored solutions designed in collaboration with client teams.

Our trunking and floor boxes are hand-finished with great care here in the UK and can be customised so they match our customer's design perfectly.

We are a family-owned business that has been manufacturing in the UK for 50 years, something of which we are very proud.

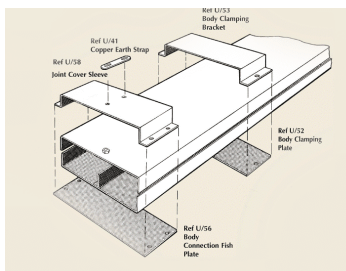
The secret of our longevity and success is undoubtedly our team and we all take great pride in providing the highest quality products and service to our customers.

We have global reach and operate in all sectors in the UK and internationally. Our most prominent sectors include: hospitality, commercial, prime residential, retail, palaces and heritage.

Our customers are at the heart of everything we do and it is their challenges and feedback that drive us. We enjoy working with all customer segments, including but not limited to: architects, designers, consultants, contractors, wholesalers and homeowners.

We believe what sets us apart is our collaborative approach to working with customers and our focus on providing outstanding quality products and service, tailored to our customers' specific needs.

TRUNKING RANGES



Underfloor in screed



Flush floor



Perimeter



Pedestals



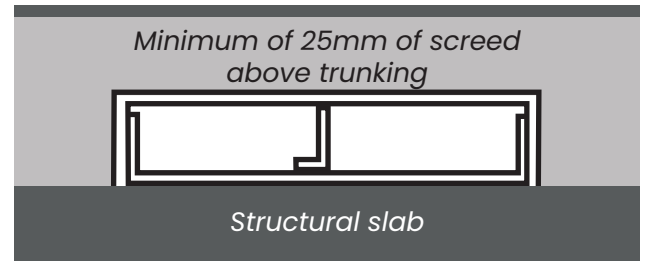
Surface

UNDERFLOOR IN SCREED TRUNKING

Comprehensive · Robust · Integrated · Junction & Floor box-compatible

IN SCREED TRUNKING SYSTEM

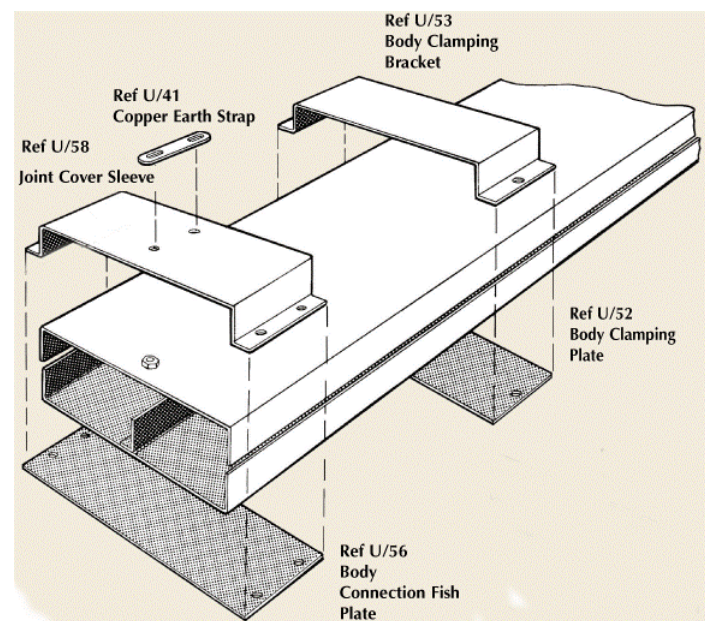
- Designed to be buried in the floor screed and laid and wired prior to screeding
- Services then brought out through junction and floor boxes
- Comprehensive and easy-to-install trunking system, with 4 basic components: Trunking, Service/Outlet boxes, Junction boxes, Vertical access
- Trunking integrates fully with our service box range when there is a minimum screed depth of 65mm
- Junction boxes make changes in direction possible and allow access to wiring services



(2 compartment and 3 compartment)

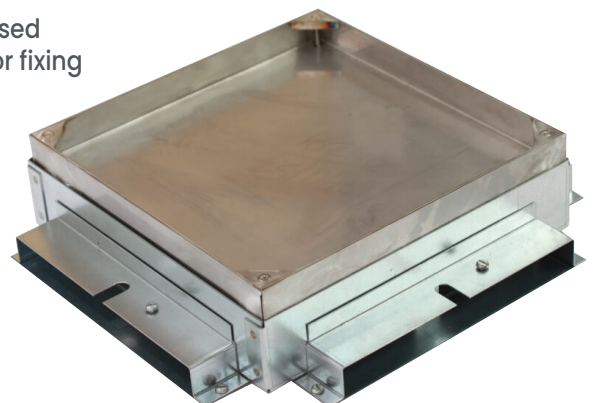
TRUNKING

- Robust trunking (1.2mm galvanised steel) for use in screed from 55mm deep
- Standard trunking sizes from 150x25mm to 225x25mm
- 2-3 compartments possible, with fixed dividers
- Trunking lengths are 2m long and come complete with necessary clamp and body connectors
- No exact levelling of the trunking is required
- Vertical riser bends enable integration with our perimeter trunking
- Bespoke trunking solutions available



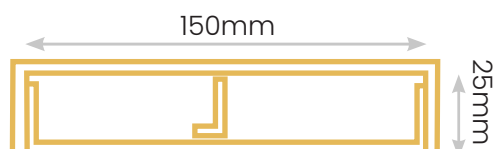
JUNCTION BOXES

- Order junction box to suit the minimum expected screed height - standard base box depths are 65mm, 85mm and 120mm
- Finish to be matched to final floor covering and floor box finish
- Square in 2 sizes as standard, 200x200mm and 300x300mm. Bespoke available
- Lid recess can be any depth between 3mm-30mm. Standard is galvanised steel trimless lid with a shallow 6mm recess (fitted with 4x M8 bushes for fixing the lid and to allow future lifting)
- Lids available in stainless steel or satin brass with 4x corner blocks, to match Minima and 700 floor boxes. Trimless as standard or with trim flange as option
- Junction box supplied with flyover sets for segregation and height-adjustable inner frame for perfect on-site levelling
- Alternative bespoke finishes available for recessed lids: antique bronze, jordan bronze, antique brass, powder-coated
- Available as option: Flat junction box lid secured by 4x countersunk screws in corners

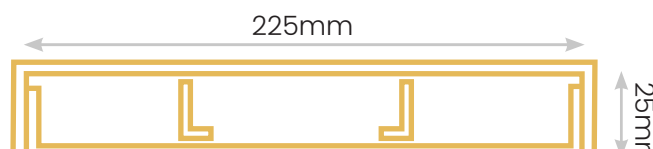


TRUNKING DETAILS

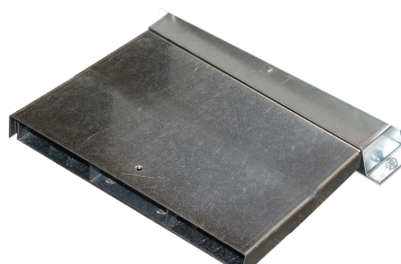
Trunking type (<i>ref. 91</i>)	Overall Width x Depth (mm)	Length (mm)	No. of Compartments	Junction/Outlet/floor box integration
U2	153x26.5	2000	2	All via spigot
U3	228x26.5	2000	3	



U2

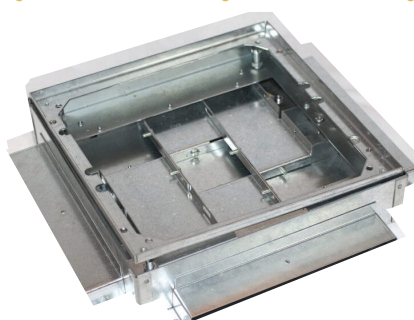


U3



JUNCTION BOXES

Junction box type (<i>ref.</i>)	U2 junction box size (mm)		U3 junction box size (mm)		Base box depth (mm)
	Lid-frame	Base box	Lid-frame	Base box	
Cross (94)	200x200	Standard assembly: 210x210 Retrofit: 200x200	300x300	Standard assembly: 310x310 Retrofit: 300x300	65/85/120
Tee (95)					
Angle (96)					
Through (97)					
Terminal (98)					

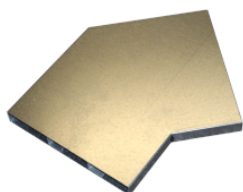


Junction box

ACCESSORIES



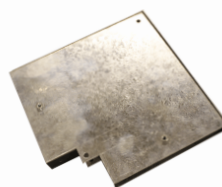
End Cap (38)



45deg. bend (45)



Vertical bend (92)



Horizontal bend (93)



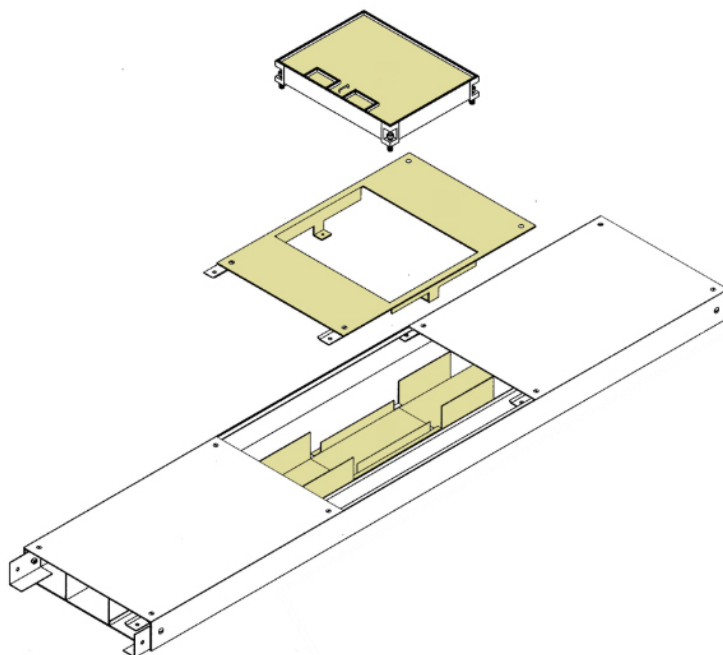
Copper earth strap (41)

FLUSH FLOOR TRUNKING

Comprehensive · Robust · Flexible · Modular · Floor box-compatible

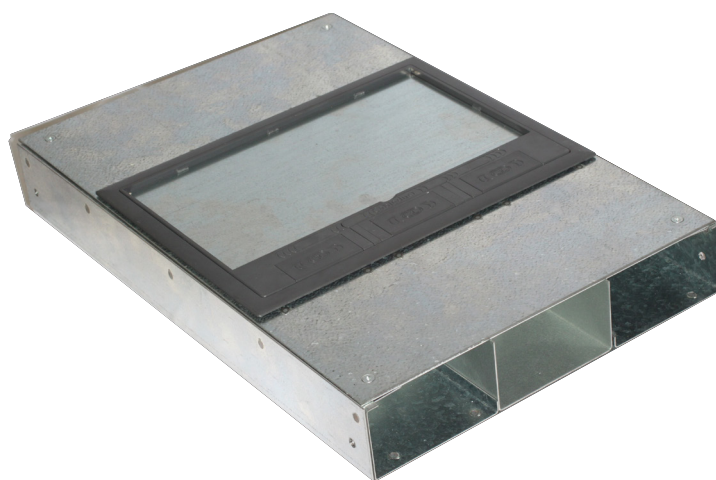
FLUSH FLOOR TRUNKING SYSTEM

- Fits within screed but flush with top of screed
- Comprehensive and easy-to-install trunking system, with 4 basic components: Trunking, Service/Outlet boxes, Junctions, Vertical access
- Flush floor modular system is best and most flexible if floor box locations will need to be changed in future, with removable covers and compartment dividers
- Trunking integrates fully with our 500 and 2000 series floor boxes, which have a 6.5mm max lid recess (if lid recess is >6.5mm, use in-screed trunking). These can be fitted at any point along the trunking run, except at junctions, any time after screeding (trunking to be minimum 55mm deep)



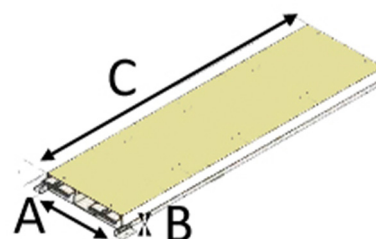
TRUNKING

- Heavy duty flush floor trunking (1.5mm galvanised steel) for use in screed from 25mm deep, with the lid flush with top of screed
- Extensive range of standard trunking, ranging from 153x25mm to 443x65mm
- Trunking lengths are 2m, complete with lid fixing and body connectors
- 2-4 compartments possible, with dividers (500mm long) providing segregation and required lid support. Dividers are removable for trunking >55mm deep, which is compatible with our floor boxes and allows floor box location to be changed at any time
- Vertical riser bends enable integration with our perimeter trunking
- Bespoke trunking solutions available
- Lay trunking fully on a supporting flat ribbon of screed to avoid distortion of trunking cover



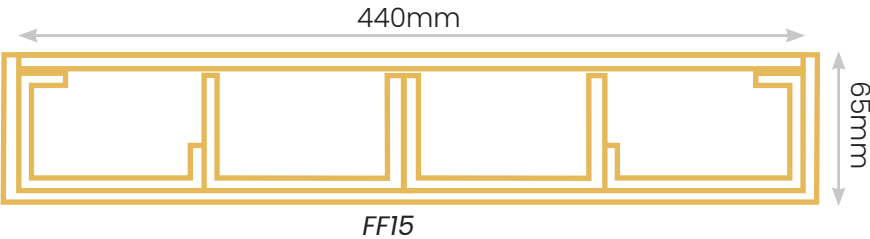
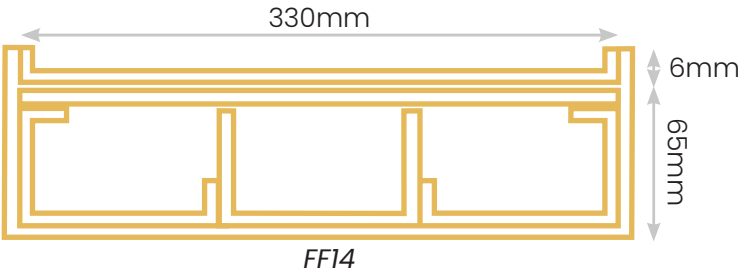
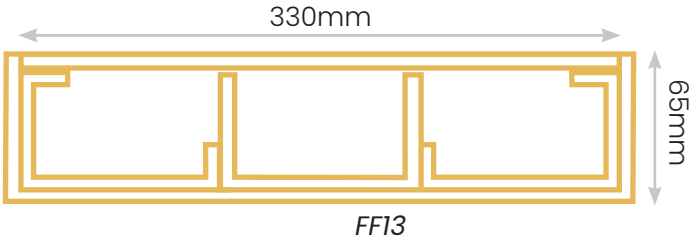
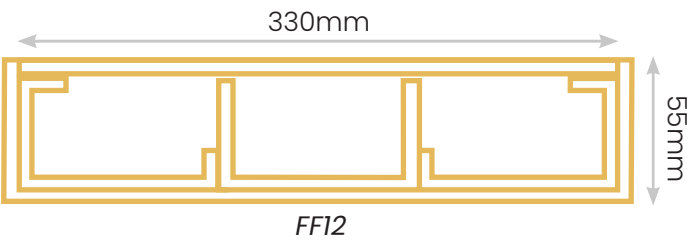
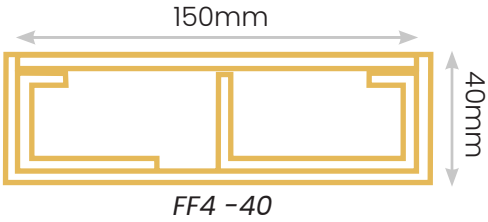
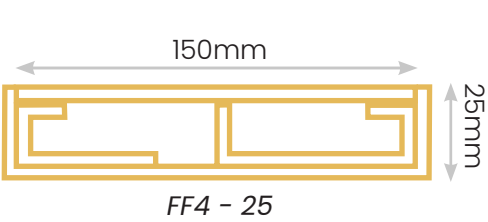
LID

- Removable load-bearing lid in 500mm lengths (2.5mm galvanised steel), either flat or with recessed lid to take floor covering
- Recessed trunking lid has recess depth of 6mm, suitable for carpet and vinyl. Fixings supplied
- Available as option: Gasket for lid or channel



PRODUCT DETAILS

Trunking type (ref. 130)	Overall Width (A) x Depth (B) (mm)	Length (C) (mm)	No. of Compartments	Floor box integration
FF4 - 25	153x25	2000	2	2000 and 500 - via spigot (boot)
FF4 - 40	153x40	2000	2	2000 and 500 - via spigot (boot)
FF12	333x55	2000	3	2000 and 500 - within trunking run
FF13	333x65	2000	3	2000 and 500 - within trunking run
FF14 (recess lid - 6mm)	333x71	2000	3	2000 and 500 - within trunking run
FF15	443x65	2000	4	500 - within trunking run

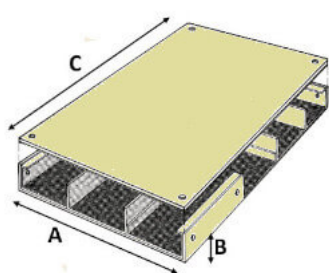


FLUSH FLOOR TRUNKING (cont.)

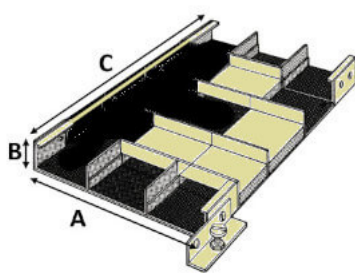
PRODUCT ACCESSORIES

Accessory type	Accessory (C) length mm (width & depth are same as trunking type)					
Trunking type (130)	Flat bend (131)	Tee (*) (132)	Cross (*) (133)	Vertical bend (134)	45 degree bend (144)	End cap (138)
FF4 - 25	251	350	350	25	160	N/A
FF4 - 40	251	350	350	40	160	
FF12	500	500	500	55	250	
FF13	500	500	500	65	250	
FF14 (recessed lid -6mm)	500	500	500	65	250	
FF15	540	644	644	65	-	

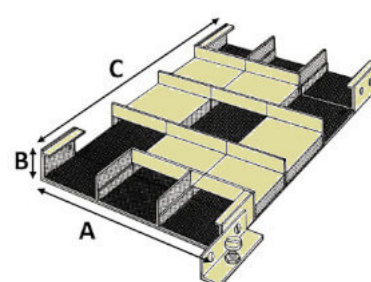
*Depth is 40mm for FF4 - 25



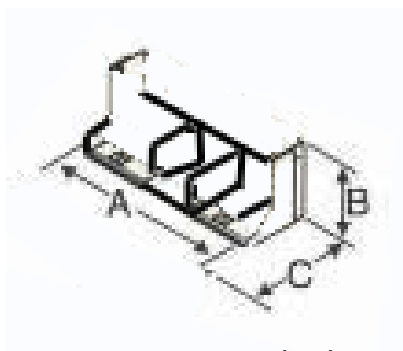
Flat bend (131)



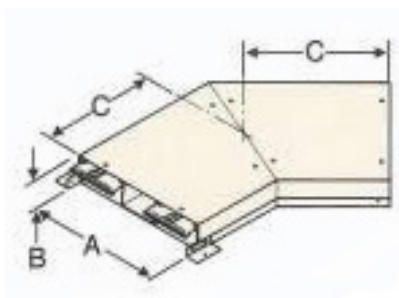
Tee (132)



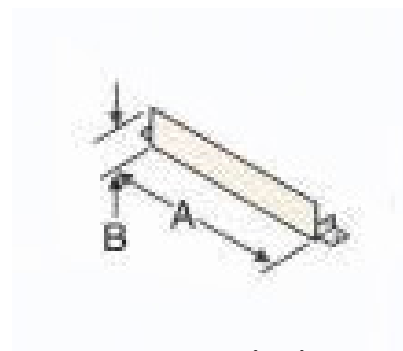
Cross (133)



Vertical bend (134)



45 degree bend (144)



End cap (138)

PERIMETER AND BENCH TRUNKING

Discreet access to power & data at the right height · Robust · Flexible

LIDS

- Steel lid (1.2mm), and standard finishes include: powder-coated, white (white pre-coated steel with a galvanised substrate), galvanised steel, stainless steel. Other finishes available on request; including satin brass
- Lid tops can be either square or chamfered
- Lid profiles differ at the bottom depending on product type: *skirting* - no bottom return; *dado* - full depth bottom return
- All lids can be moved into any position, allowing service outlet parts to be placed wherever needed and can be easily moved after initial installation to accommodate changes in layout at any time



PERIMETER TRUNKING

- Robust trunking body in galvanised steel (1.2mm)
- Extensive range of standard trunking in 2m lengths, ranging from 150x40mm to 200x50mm, 2-3 compartments possible, with fixed dividers
- Rapid and easy installation with fixings included. Threaded connectors so no need for nuts
- Extensive range of standard accessories to eliminate on-site fabrication. Odd angle bends and pier sets can be custom-made to site specification
- Cover strap fixings for standard profiles allow on-site cuts to be covered easily
- Trunking dividers are provided with 20mm knock-outs at 200mm centres to ensure easy positioning of outlets at any location
- Trunking is designed to have socket outlets at one level (except J3) and knockouts in the partition enable bodies to be fitted prior to the wiring layout being finalised. Socket outlet plates are then placed where required
- Full segregation between power and data using steel dividers. For outlet plates fed by an outer compartment, the partition knockout is removed and a screening saddle (ref.72) is fitted in its place to provide back box segregation

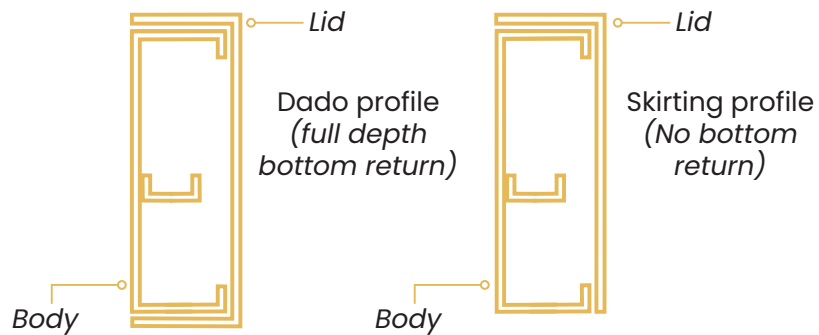


BENCH TRUNKING

- Low-profile trunking with sloping lid
- Sized 100mm deep x100mm high with top return of 25mm
- Trunking, lids and accessories as per perimeter trunking



PERIMETER TRUNKING DETAILS



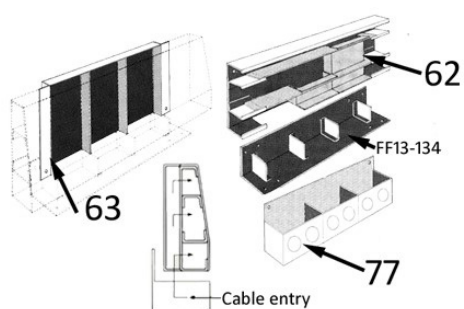
Perimeter Trunking type	Image	Body (50)	Lid (51)	Lid-top shape	Depth (mm)	Height (mm)	Length (mm)	No. of Compartments	Height-compartment split (mm)
Dado		J2	J2	Square top	40	150	2000	2	40/110
Skirting		J2	H2	Square top	40	150		2	40/110
Dado		DD3	DD3	Square top	50	150		3	37.5/75/37.5
Skirting		DD3	H3	Square top	50	150		3	37.5/75/37.5
Dado		J3	J3	Square top	40	200		2	100/100
Dado		K2	KD2	Chamfered top	40	200		3	50/100/50
Skirting		K2	K2	Chamfered top	40	200		3	50/100/50
Dado		DD4	DD4	Square top	50	200		3	50/100/50
Skirting		DD4	H4	Square top	50	200		3	50/100/50
Dado		KK4	KK4	Chamfered top & bottom	50	200		3	50/100/50

BENCH TRUNKING DETAILS

Product type	Image	Body (50)	Lid (51)	Lid-top shape	Depth (mm)	Height (mm)	Length (mm)	No. of Compartments	Height-compartment split (mm)
Bench		V1	V1	Chamfered	100	100	2000	1-2	N/A

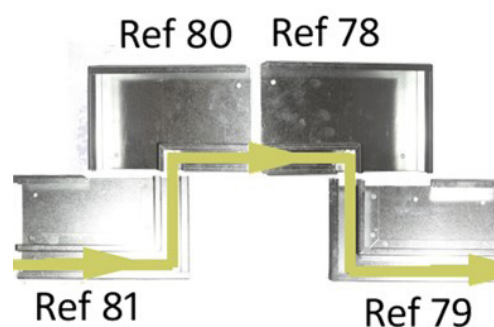
PRODUCT ACCESSORIES

Entries (ref)	Base entry	Back entry	Cable / Conduit entry
Perimeter trunking:	62	63	77



Entry-base, back, cable

Bends (ref)	Flat bend - right hand (down)	Flat bend - right hand (up)	Flat bend - left hand (down)	Flat bend - left hand (up)
Perimeter trunking:	78	79	80	81



Flat bends

Accessories (ref)	End cap	Copper earth strap
Perimeter Trunking	59	C41
Bench Trunking	159	C41

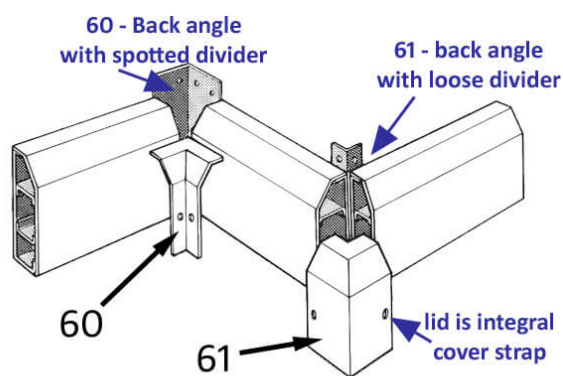


End cap



C41

Bends (ref)	Internal bend (Body and Lid)	External bend (Body and Lid)
Perimeter Trunking	60	61
Bench Trunking	162	163

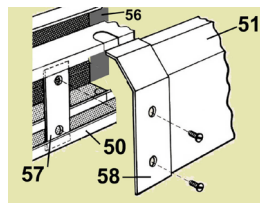


Internal & External bends

PERIMETER AND BENCH TRUNKING (cont.)

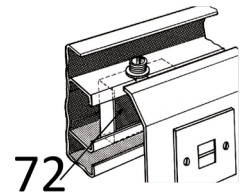
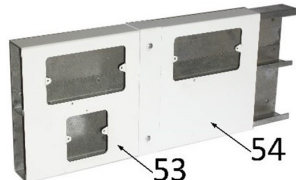
PRODUCT ACCESSORIES

Fixings (ref)	Body	Lid	Body fixing plate (with body ref. 50)	Lid fixing - back strap (pair with cover strap ref.58)	Lid fixing - cover strap (pair with back strap ref.57)
				Supplied with all lid items	Supplied with all lid items
Perimeter Trunking	50	51	56	57	58
Bench Trunking	50	51	156	157	158



Body, lid & fixings

Outlets (ref)	Outlet - 1 gang	Outlet - 1 + 2 gang (J3 only)	Outlet - 2 gang	Panel mounted twin socket	Outlet screening saddle (excl. J3)
Perimeter Trunking	52	53	54	64	72
Bench Trunking	152	N/A	154	VI-174	VI-172



Outlet - 1 gang (52) Outlet - 1 + 2 and 2 gang (53, 54) Panel mounted twin socket (64) Outlet screening saddle (72)

FIXINGS INCLUDED

Body (50)

Each length of trunking body (50):

- 1x Back plate connector (56)
- 4x M5 x 6mm panhead screws and washers

Bend (60/61)

Each bend comes with:

- 1x body (61 is a back angle with loose dividers)
- 1x lid
- 1x fixing strap (57) to suit
- 1x or 2x M5 x 20mm pozi screws
- 4x M5 x 6mm pan head screws for body

Lid (51) and Socket Lid (52, 54)

Each length of trunking lid (51) / socket lid (52, 54):

- Fixing strap (57) to suit
- Cover strap (58) to suit
- 1x or 2x M5 x 20mm pozi screws to suit fixing strap

Outlet screening saddle (72) (excl J3)

Each screening saddle (72) comes with:

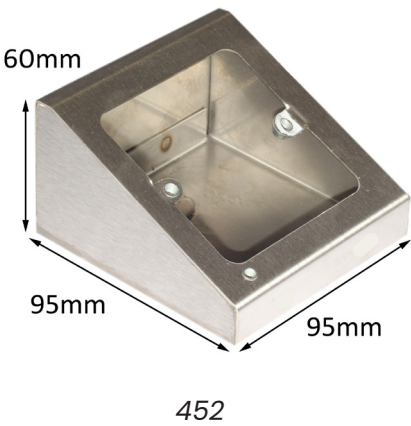
- 1x screening back box
- 1x lock nut
- 1x lock ring
- 1x M5 x 6mm panhead screw

PEDESTALS

Power & data to benches & desks · Metal/colour finishes ·
Low-profile · Easy-to-install

PEDESTALS

- Attractive pedestals in powder-coated zintec steel (1.2mm) with stainless steel as *option*
- Extensive range with multiple outlet options
- 1-3 gang possible, with full segregation of power and data
- Low-profile sloping top
- Powder-coated finish to blend in with decor, as standard
- Available single or double-sided



PRODUCT DETAILS

Pedestal type		Ref.	Width (mm)	Depth (mm)	Height (mm)
	Single-sided, 1 gang	452	95	95	60
	Double-sided, 1 gang	442	95	190	
	Single-sided, 2 gang	454	190	95	
	Double-sided, 2 gang	459	190	190	
	Single-sided, dual 1 gang	458	208	95	
	Double-sided, dual 1 gang	443	208	190	
	Bespoke				

With each box: 1x M5 x 6 pan-head screw for earth

SURFACE TRUNKING

Comprehensive range · Robust · Rapid & easy installation

TRUNKING

- Robust trunking in galvanised steel (1.2mm)
- Expansive trunking system with standard trunking lengths of 2m, ranging from 50x50mm to 300x150mm and all points in-between (trunking of different height but identical width use the same width lids, i.e. 100x50mm and 100x75mm both use 100mm lids)
- Made-to-order: Any size, or profile, can be manufactured
- Multiple compartments *available as option*, with equal sizes as standard. If unequal-sized compartments are required, following details to be specified on ordering: sizes/spacing of each compartment, 'handing' of flat bends
- Rapid and easy installation with fixings included. Threaded connectors so no need for nuts
- Extensive range of standard accessories to eliminate on-site fabrication
- Quick release lid with metal turnbuckle fastener
- Alternative finishes: powder-coated, white (white-coated steel with a galvanised substrate), stainless steel
- *Available as option*: gasket for lid and all joints gives weatherproof seal (E20 only)



FIXINGS INCLUDED

Body (C20)

Each length of trunking body comes with:

- 1x pair of sleeves C390 (to suit height of trunking)
- 4x M5 x10mm panhead screws and washers for 50mm or 75mm deep (8no. for trunking 100mm or deeper)

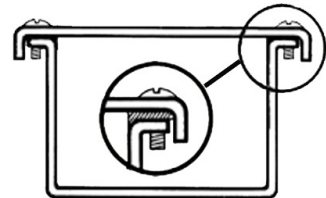
Bend - multiple types

Each bend comes with:

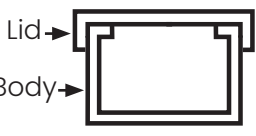

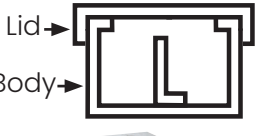








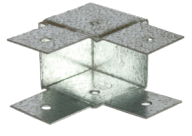





- 1x lid
- 4x M5 x10mm panhead screws and washers for 50mm or 75mm deep (8no. for trunking 100mm or deeper)

Non-gusset bends MAY also need a pair of sleeves (to suit height)

Gasket for weatherproof seal - E type



PRODUCT DETAILS

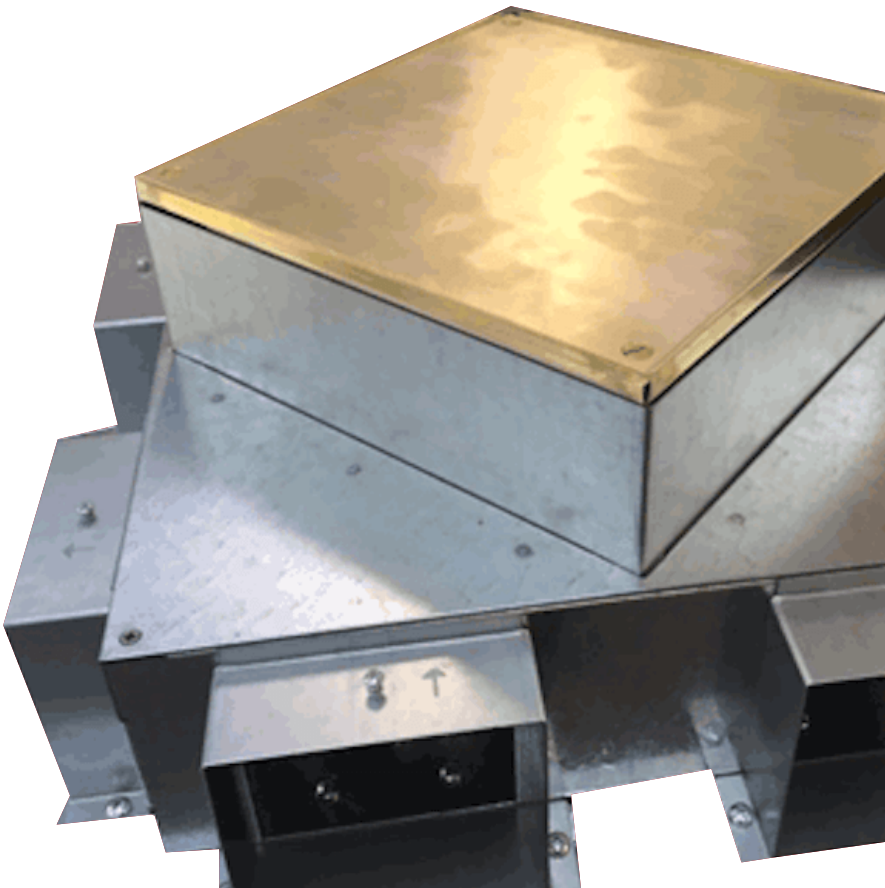
Product		Ref.	Product		Ref.
 <p>Lid →</p> <p>Body →</p>	Body and lid (2m length) - single compartment (standard)	Body: C20 Lid: C20L		Terminating flange end	C42
 <p>Lid →</p> <p>Body →</p>	Body and lid (2m length) - multiple compartments (equal or unequal)	C20Y2		Top 45 degree bend	C44
	Top gusset bend	C21		Inside 45 degree bend	C45
	Top gusset tee	C24		Outside 45 degree bend	C46
	Top gusset cross	C27		Outside square bend	C47
	Flange tee	C28		Inside square bend	C48
	Top square bend	C32		Inside gusset bend	C60
	Top square tee	C33		Outside gusset bend	C61
	End cap	C38			

TAILORED SOLUTIONS

Cableduct trunking and floor boxes can be bespoke designed to meet your exact project specifications.

Whatever size and shape of trunking or floor box you need, we can design, manufacture, and supply the perfect solution for you.

Many of our bespoke trunking and floor box units use the features of our standard products tailored to meet your requirements. This enables us to offer a myriad of solutions to meet almost any of your cable management needs.



YOU DESIGN

What you need your trunking and floor box to do and what you want them to look like are paramount for us.

Cableduct take into consideration project details, site conditions and your design intent for the project.

Developing a tailored solution for the interior and exterior of your desired trunking/floor box solution is a consultative process; we're with you every step of the way.

WE BRING TO LIFE

We create bespoke trunking/floor box solutions tailored to suit your specific project requirements.

Our skilled team transform the most intricate cable management design ideas into a high-functioning and aesthetically-attractive reality (i.e. ideas to reality).

We work with each individual client to help realise their vision. We can create any-sized trunking and floor box and many bespoke junction and floor box shapes, including parallelograms, triangles and hexagons.

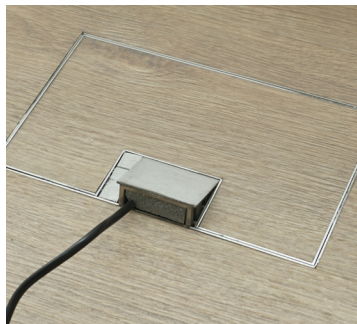
We can also often match your floor box's design with your floor covering and the finish with other accessories in the room for a seamless design.





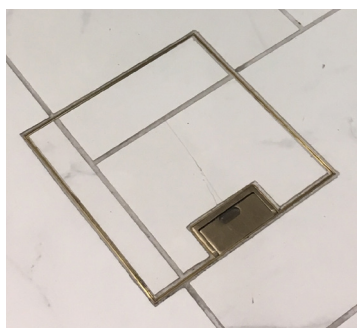
Discreet market leading floor boxes for premium brand markets

Cableduct floor boxes lead the industry for quality, choice, and application. Our floor boxes have been used in a diverse selection of applications across the world. At Cableduct, our mission is to consistently design, manufacture, and supply the best floor boxes in the cable management industry.



MINIMA

For a sleek contemporary finish, the Minima floor box is the perfect choice. Compatible with an extensive range of accessories and with spring-closed outlets, it will ensure that any habitable space is aesthetically attractive and safe from loose cables and wires. The perfect choice for stylish protection against trailing leads.



700 Series

The 700 series floor box is designed to create a stylish heritage aesthetic. Featuring a retro-style cable opening function with pull-up handle, it is discreet and understated and suitable for all types of residential and commercial installations. It is often specified for use in timber floored offices where a multi-outlet floor box is required.



2000 Series

If your project includes carpet-tiled floors in offices, a more generic floor box is all that is needed. Where style and discretion are secondary to functionality and protection, or if a project is time sensitive and requires numerous floor boxes, the 2000 series floor box is the best option and will not compromise your safety or your interior aesthetic.



500 Series

The 500 series floor box is a versatile cable containment unit available in many sizes. The Lid is trimless in the 500 series floor box's design. It is completely discreet with recesses even in the outlet flaps. It is a popular option for installations in open plan offices and schools and where site conditions and budgets are restricted.



Access Grommets

Access grommets are for access only, no power or data sockets are fitted within the grommet. They are a popular choice for large scale cable containment and distribution. They can be specified in a range of sizes to meet your project requirements. Standard finish is stainless-steel or brass, with optional bronzing and powder-coating available.

TWO PREMIER FLOOR BOX RANGES

Cableduct's Minima and 700 Series floor boxes are setting new standards in premium floor box solutions.

Our commitment to superior engineering and thoughtful design delivers unmatched quality and sophistication for your projects.

What sets apart our floor boxes?

- Nearly invisible floor boxes with very little metal showing.
- Customised lid-recess depth to suit your floor covering.
- Hand finished lid in stainless steel or brass, with special finishes including bronzing, powder coating and mirror polishing.
- Heavy-duty and discreet solid cast handle and outlet flap.
- Welded and dressed seams for added strength and smooth continuous lines.
- Rectangular, square or round as standard, with bespoke shapes available including diamond and parallelogram.



MINIMA

- Contemporary unbranded design.
- Patented spring-closed handle & flaps keep lid fully flush with floor.
- Two cable exit flaps give more space for leads exiting larger square and rectangular floor boxes.



700 Series

- Classic design with discreet CD logo.
- Elegant look with smooth rounded edges to outlet flap & handle.

Floor box type and attributes

KEY PRODUCT ATTRIBUTES		2000	500	ACCESS GROMMET	700	MINIMA
SHAPE	Rectangular	Y	Y		Y	Y
	Square				Y	Y
	Round			Y	Y	Y
	Bespoke				Y	Y
FINISH	Stainless steel			Y	Y	Y
	Satin brass and bronze / brass lacquer finish			Y	Y	Y
	Powdercoat			Y	Y	Y
	Mirror polished flap, handle and lid-frame				Y	Y
	Unbranded (no Cableduct branding)		Y	Y		Y
	Style	Plastic trim	Shallow	Access only	Classic	Contemporary
	Plastic PC / ABS trim flange (fire retardant)	Y				
SIZE	No. Compartments / outlet plates	3 to 4	1 to 4	N/A	1 to 4	1 to 4
	Base box depth (mm)	55-120	55-120	65	65-120	65-120
	Min height required for floor box (base box bottom to top of floor covering)	62	62	68	75	75
FLOOR COVERING DEPTH	Lid recess - up to 6mm (fixed)	Y	Y			
	Lid recess - up to 30mm			Y	Y	Y
INSTALLATION	Retrofit installation (retro)			Y	Y	Y
	Trim flange (option for 700/ Minima/Access Grommet)	Y	N	Y	Y	Y
OPTIONS	Flat lid (completely metal; no recess)		Y	Y	Y	Y
	Extra strength lid				Y	Y
	Brush cable exit					Y
	Mousehole cable exit				Y	Y
	IP65 - when not in use				Y	Y
	Access hole closer			Y		



CABLEDUCT

— L I M I T E D —

020 8683 1126 | sales@cableductuk.com | www.cableductuk.com

Cableduct Limited, 30 Selhurst Road, London SE25 5QF. Registered Company Number 00364046